

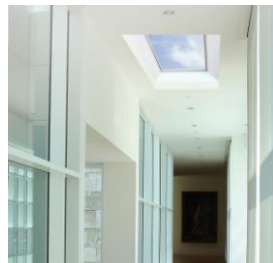
Congratulations on your purchase of the **Megalux Glassframe**. This quality product makes it easy to upgrade the insulation on your existing or new skydome for continuing enjoyment of natural daylight.

Installation instructions

1. For mounting the curb, do follow the guidelines for assembly and maintenance, supplied with the Megalux skydome.
2. Beware, before properly placing and centering the Megalux glassframe on top of the curb, the upper flange of the curb is flat and clean.
3. The mounting holes are already drilled. Insert the supplied long screws in these holes.
4. Carefully screw the glassframe crosswise with the supplied screws on the curb. Important: screwing too hard can cause permanent damage and will result in waiving the warranty. Therefore always screw with limited torque (max 1.5 N/m).
5. To complete the Megalux glassframe there must be a Megalux skydome on top of it. For mounting the skydome you can follow the guidelines for assembly and maintenance, supplied with the skydome.

Maintenance tips

- You may clean the window-frame and the curb with non-abrasive neutral cleaners.
- The glass can be cleaned with normal glass cleaning products.
- Megalux skydomes are self-cleaning. If you still want to clean the dome use only mild soap and lots of water.
- Important: never bring the skydome in contact with aggressive substances. Example given: silicone adhesives, thinners, insect spray. These can damage acrylic and polycarbonate irrevocable (tension cracks) and will result in waiving the warranty on the skydome. Each heating of the skydome can result to distortion. Never place the skydome flat on the roof or wrapped in the Sun. Damage caused by this so called greenhouse-effect is not covered by warranty.



Warranty:

Megalux-skydomes, ventilation systems and curbs, when installed accordance to instructions, are guaranteed for a period of 10 years.

Quality:

Megalux daylight systems are developed, produced and delivered according to ISO 9001 and comply with the European skydome standard EN1873.