



**MEGALUX**<sup>®</sup>  
skydomes



SMART WITH DAYLIGHT

Price list MEGALUX<sup>®</sup> June 2026



**SMART WITH DAYLIGHT**

## INDEX

- 5 **About Van Deudekom Plastics**
- 7 **Information skydomes acrylic (AC) and skydomes polycarbonate (PC)**
- 8 **Skydomes acrylic (AC)**
- 9 **Skyomes polycarbonate (PC)**
- 10 **Information curbs PVC**
- 11 **Curbs PVC sloping model and vertical model**
- 12 **Information curbs polyester and other versions**
- 13 **Curbs polyester wide flange**
- 15 **Curbs polyester H15  
Roofsize finishing and curb adaptors**
- 17 **Round skydomes acrylic (AC) and polycarbonate (PC)**
- 17 **Round curbs, curb adaptors, roofsize finishing and ventilation frames**
- 18 **Information ventilation frames, anti burglar bars / safety grids**
- 19 **Ventilation frames, anti burglar bars / safety grids**
- 20 **Information skydomes Hybride**
- 21 **Skydomes Hybride with curb vertical model and sloping model**
- 23 **Megalux® ISO-PC window**
- 25 **Megalux® Glass-window**



- 27 **Megalux<sup>®</sup> Glass-Unit**
- 29 **MegatubE**
- 30 **Ventilation units, PVC and Polyester**
- 31 **Escape hatches**  
**Roof access hatches**
- 32 **Information Smoke and Heat exhaust**  
**ventilation systems**
- 33 **Smoke and Heat exhaust ventilation systems**
- 34 **Technical data**
- 35 **Prices, guarantee, quality and conditions**



## Van Deudekom Plastics

We are a third-generation family business and have been specializing in the development and production of skylights since 1972. We are an ISO 9001 certified company that has quality and customer focus as its main core values. Our products have been further developed and optimized over many years. By using high-quality materials and a robust production process, the quality of our product is of a very high level. Our Megalux® - skydomes are independently tested and comply with the strict European industry standards EN 1873 and EN 12101-2. Partly due to this, Van Deudekom Plastics, with its broad range and Megalux® - skydomes, has held a strong market position for years.

## Corporate Social Responsibility (CSR)

Van Deudekom Plastics is firmly committed to the principles of Corporate Social Responsibility (CSR). We continuously work to reduce our environmental footprint, improve energy efficiency, and integrate circularity into our products. At Van Deudekom Plastics, CSR represents an ongoing process of awareness and responsible action across social impact, energy use, and cost efficiency.

## Sustainability

By using Megalux® - skydomes you bring the sun into your home. With enough daylight, our bodies produce more vitamins, we feel fitter, and our productivity increases. Daylight gives energy and supports our circadian rhythm. Those who get enough daylight during the day feel better and sleep better at night.

With a Megalux® - skydomes, the indoor climate can naturally adjust, and you are ensured good insulation and ventilation. Where there is light, there is a sense of safety and fewer mistakes are made.

Why turn on the lights unnecessarily when you can bring in daylight? By using Megalux® - skydomes, you can halve the energy costs for artificial lighting. In doing so, you also bring in a free heat source. Thanks to the latest technologies, daylight products and insulation go hand in hand. If you choose sustainable, you choose Megalux® - skydomes.



Daylight is not a luxury; it is an absolute necessity. For our well-being, our safety and in accordance with regulations. Specific requirements are set for this in the Building Decree and the Working Conditions Decree.

The Megalux®-skydomes can therefore be found in the national environmental database. This indicates, based on the life cycle inventory, how environmentally friendly a skydome actually is.

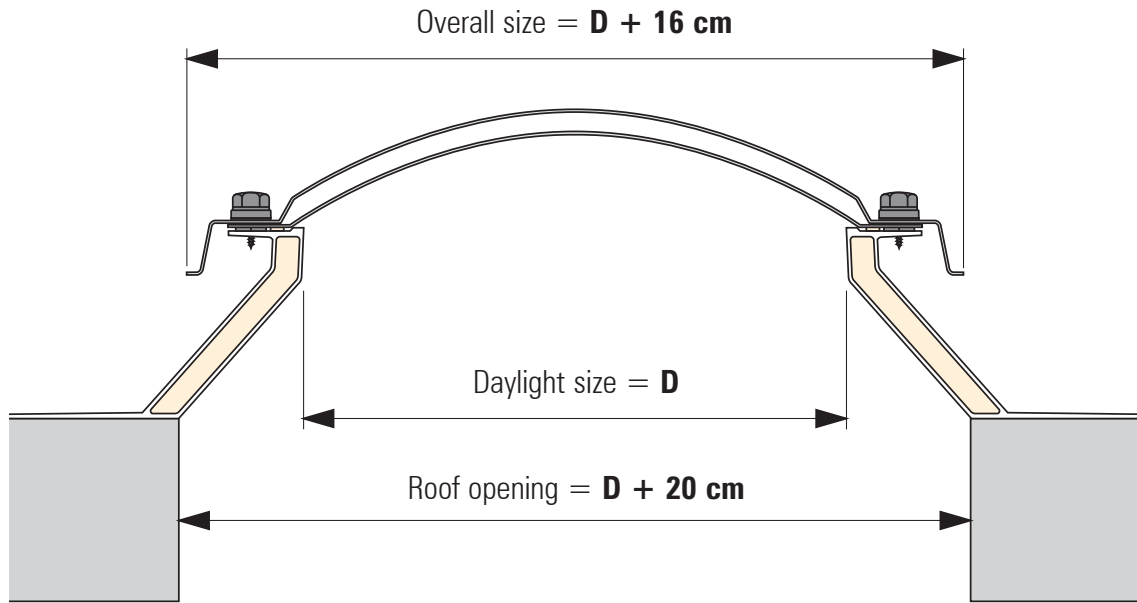
**At Van Deudekom Plastics, we are continuously improving our processes toward a CO2-neutral society.**



Skydome opal with curb PVC BF16EP



# Information skydomes acrylic (AC) and skydomes polycarbonate (PC)



## Skydome versions

- Multi skinned skydomes in opal are produced with clear inner shells.
- Three and four skinned pyramid skydomes are standard produced with one or two curved inner shell/shells.
- Multi skinned polycarbonate skydomes are standard produced with a clear outer shell of polycarbonate (PC) and an inner shell of clear or opal acrylic (AC).
- On request and for extra payment the skydomes are also available in various colours and in Heatstop.

## Skydome utilization

- Single skinned Megalux<sup>®</sup>-skydomes can be used in uninsulated and unventilated areas.
- Multi skinned Megalux<sup>®</sup>-skydomes are so constructed that the space between the skins is optimized for maximum insulation.
- Polycarbonate skydomes are made of high impact material which delays burglarly.



## ISO-domes

Due to a multiwall, inner skinned ISO-domes have a very low U-value and are therefore excellent suitable for living environments. ISO-domes consists of an inner and outer opal AC shell, within a PC multiwall clear shell to guarantee high insulation.

## High impact polycarbonate skydomes

The impact strength of polycarbonate is 300 times stronger than glass, so it is almost unbreakable. Together with the Megalux<sup>®</sup>-anti burglar bar the polycarbonate skydome is a strong weapon against uninvited guests.

## Maintenance

- Skydomes can only be cleaned with a mild household detergent and plenty of water.
- Avoid contact of skydomes with silicones, adhesives, solvents and bitumen (list of restrictions available on request).

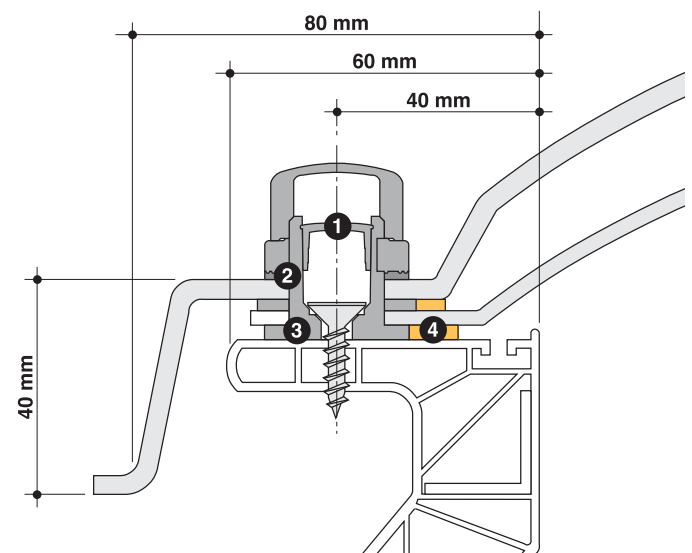
## High impact polycarbonate fixings

Megalux<sup>®</sup>-skydomes are completed with a unique fixing system made of high impact polycarbonate. Fixing consists of a screw, a cap and anti-theft security insert to slowdown intruders.



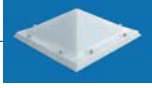

The EPDM sealing rings have a permanent elasticity. The whole system is made in gray, which guarantees least possible thermal load. The Megalux<sup>®</sup>-fixture system is universal and therefore interchangeable with all parts of the program.

The whole system is designed for a fast and hassle-free/easy mounting.

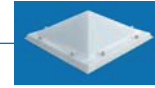
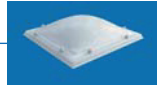
- 1) Anti-burglary cap
- 2) EPDM ring
- 3) Optimum distance
- 4) PE tape




# Skydomes acrylic (AC)

 Daylight size D in cm	 Dome				 Pyramid				 ISO-Dome
	1-S AC	2-S AC/AC	3-S AC/AC/AC	4-S AC/AC/AC/AC	1-S AC	2-S AC/AC	3-S AC/AC/AC	4-S AC/AC/AC/AC	6-S AC/PC/AC
30 x 30	100	131	167	206					
40 x 40	107	145	185	220					
50 x 50	129	185	243	301					289
55 x 55	140	200	260	324					315
60 x 60	152	204	264	325	207	280	345	408	320
70 x 70	158	236	324	410	220	325	420	514	388
75 x 75	179	278	388	501					468
80 x 80	188	301	426	552	259	419	551	682	508
90 x 90	214	343	484	626	303	472	624	776	571
100 x 100	242	374	512	653	342	501	665	831	611
105 x 105	278	473	688	902					824
110 x 110	298	506	724	943					869
120 x 120	339	557	786	1014	458	721	989	1256	943
130 x 130	413	617	835	1055	552	798	1055	1309	1001
140 x 140	475	774	1090	1409					1332
150 x 150	591	894	1216	1536	795	1159	1537	1921	1473
160 x 160	653	1009	1392	1777	876	1313	1756	2199	1661
180 x 180	863	1415	2005	2595	1080	1768	2350	2933	
200 x 200	1397	2181	2849	3716	on request	on request	on request	on request	
220 x 220	on request	on request	on request	on request					
230 x 230	on request	on request	on request	on request					
250 x 250	on request	on request	on request	on request					
30 x 80	130	190	254	316					303
30 x 130	190	260	338	417					405
40 x 70	131	195	264	333					320
40 x 100	161	245	333	420					371
40 x 190	289	427	573	720					688
50 x 100	180	259	349	440					396
50 x 110	181	290	410	528					493
60 x 90	179	280	395	507	243	386	511	634	455
60 x 130	235	362	501	639					597
60 x 180	333	511	698	886					841
70 x 100	199	313	435	556					516
70 x 130	246	386	531	679					666
75 x 125	254	401	557	717					668
75 x 175	346	530	726	922					875
80 x 130	270	416	569	722					679
80 x 160	352	549	754	966					
80 x 180	362	571	794	1018					953
80 x 220	514	749	1001	1256					1201
80 x 230	530	766	1014	1265					
80 x 250	567	851	1155	1459					
80 x 280	619	1029	1459	1890					
90 x 120	300	500	708	918	413	680	913	1142	720
90 x 150	360	582	826	1069	493	802	1066	1329	992
90 x 180	396	668	958	1246	545	915	1234	1553	1116
100 x 130	325	480	652	820					775
100 x 150	364	591	831	1072					1024
100 x 160	375	608	859	1109					1055
100 x 190	511	776	1072	1366					1286
100 x 200	516	782	1079	1372	744	1089	1416	1747	1303
100 x 220	553	821	1112	1402					1345
100 x 230	611	948	1305	1658					
100 x 250	654	1050	1465	1884					
100 x 280	703	1132	1585	2035					1863
105 x 230	633	1079	1553	2028					
120 x 150	437	763	1108	1449	601	1043	1416	1792	1326
120 x 180	501	867	1265	1661	688	1191	1624	2059	1516
120 x 210	647	1020	1415	1813	814	1396	1832	2268	1699
130 x 160	475	831	1212	1591					1453
130 x 190	634	997	1386	1772					1661
130 x 220	712	1112	1536	1967					1847
130 x 230	738	1185	1656	2129					
130 x 250	764	1330	1935	2539					
130 x 280	940	1486	2063	2643					
160 x 190	739	1218	1726	2233					2068
160 x 220	875	1381	1940	2499					
160 x 230	942	1531	2183	2829					
160 x 250	1088	1643	2252	2861					
160 x 280	1201	1849	2563	3276					
180 x 280	1274	1961	2717	3473					

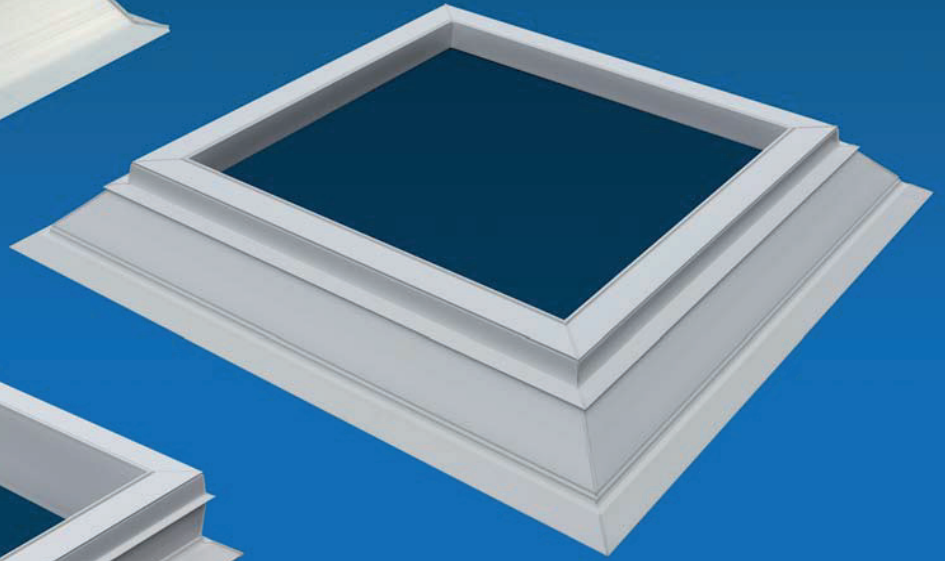
# Skydomes polycarbonate (PC)



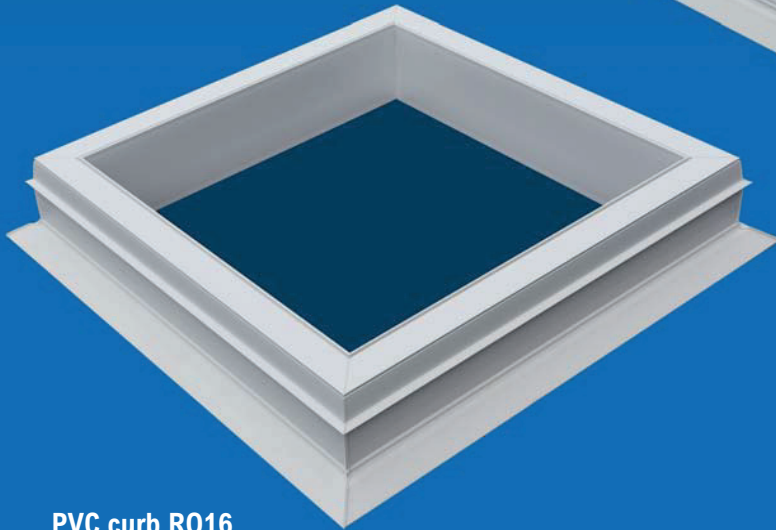
 Daylight size D in cm	Dome						Pyramid				ISO-Dome
	1-S PC	2-S PC/AC	2-S PC/PC	3-S PC/AC/AC	3-S PC/AC/PC	4-S PC/AC/AC/AC	1-S PC	2-S PC/AC	2-S PC/PC	3-S PC/AC/AC	6-S PC/PC/AC
30 x 30	135	171	196	210	219	246					
40 x 40	141	187	202	232	236	279					
50 x 50	162	212	251	277	286	336					319
55 x 55	190	254	278	319	328	391					373
60 x 60	192	268	299	346	351	425	255	373	391	490	390
70 x 70	228	324	367	422	438	521	308	432	449	557	482
75 x 75	247	335	412	432	478	567					529
80 x 80	305	416	520	534	601	654	400	553	637	707	631
90 x 90	354	479	614	646	700	743	466	640	752	811	713
100 x 100	404	530	700	707	749	795	530	708	883	886	778
105 x 105	434	569	758	768	849	957					931
110 x 110	480	626	768	802	868	1047					1004
120 x 120	579	770	978	991	1108	1172	761	1029	1198	1294	1171
130 x 130	660	873	1111	1123	1262	1327	863	1172	1365	1477	1275
140 x 140	827	1094	1417	1472	1603	1665					1673
150 x 150	915	1212	1569	1629	1772	1842	1197	1618	1929	2042	1810
160 x 160	1008	1338	1858	1909	2044	2083	1320	1783	2315	2500	2015
180 x 180	1168	1611	2179	2227	2511	2738	1530	2158	2680	2786	
200 x 200	1977	2702	3649	3794	4101	4249	on request	on request	on request	on request	
220 x 220	on request	on request	on request	on request	on request	on request					
230 x 230											
250 x 250											
30 x 80	171	228	257	288	299	347					346
30 x 130	288	410	420	538	546	664					560
40 x 70	176	247	269	314	318	384					374
40 x 100	202	285	354	370	416	466					413
40 x 190	473	595	780	810	855	859					865
50 x 100	235	315	389	404	442	493					458
50 x 110	248	351	416	457	497	587					560
60 x 90	284	369	429	466	486	566	369	490	577	613	547
60 x 130	366	511	637	662	744	811					751
60 x 180	579	761	876	952	997	1144					1104
70 x 100	336	434	557	573	623	641					645
70 x 130	421	546	688	720	772	807					836
75 x 125	423	547	701	727	781	814					825
75 x 175	603	792	912	991	1038	1192					1148
80 x 130	451	599	738	767	844	931					872
80 x 160	598	823	985	1029	1152	1233					
80 x 180	630	883	1039	1101	1230	1321					1278
80 x 220	767	1009	1113	1263	1280	1520					1477
80 x 230	796	1060	1181	1338	1365	1617					
80 x 250	844	1212	1338	1594	1621	1984					
80 x 280	1086	1384	1561	1718	1756	2051					
90 x 120	448	583	705	766	800	988	582	781	867	982	814
90 x 150	502	748	840	1003	1032	1259	664	982	1029	1301	1172
90 x 180	577	860	1026	1114	1252	1371	767	1128	1258	1488	1323
100 x 130	511	669	887	935	999	1011					975
100 x 150	546	789	913	1044	1101	1303					1239
100 x 160	614	833	1056	1066	1215	1294					1296
100 x 190	743	983	1280	1289	1447	1516					1511
100 x 200	771	1048	1337	1347	1536	1642	1013	1406	1497	1796	1587
100 x 220	887	1149	1423	1424	1591	1697					1689
100 x 230	911	1200	1424	1511	1621	1842					
100 x 250	971	1342	1623	1736	1899	2133					
100 x 280	1094	1565	1973	2073	2341	2576					
105 x 230	988	1371	1551	1752	1932	2251					2186
120 x 150	811	1023	1184	1233	1397	1609	1134	1430	1654	1729	1609
120 x 180	912	1233	1436	1554	1756	1874	1276	1728	2006	2176	1907
120 x 210	1008	1425	1586	1840	2002	2257	1408	1993	2220	2574	2131
130 x 160	893	1125	1305	1354	1533	1766					1770
130 x 190	983	1349	1551	1714	1916	2083					2040
130 x 220	1089	1539	1969	1993	2167	2447					2301
130 x 230	1119	1601	2025	2083	2247	2565					
130 x 250	1184	1752	2141	2317	2432	2885					
130 x 280	1342	1984	2315	2627	2758	3271					
160 x 190	1180	1673	2040	2167	2359	2663					2556
160 x 220	1305	1849	2250	2390	2601	2932					
160 x 230	1348	1988	2319	2633	2765	3275					
160 x 250	1430	2110	2466	2789	2931	3471					
160 x 280	1550	2289	2672	3031	3185	3773					
180 x 280	1643	2427	2832	3213	3377	4000					



PVC curb SF16

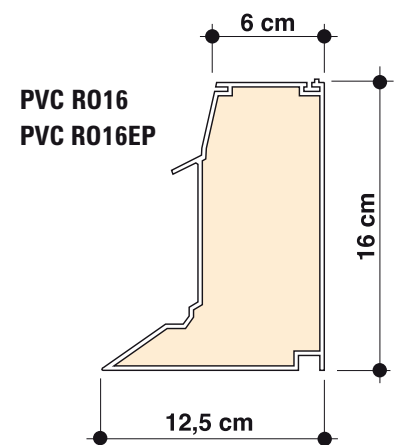
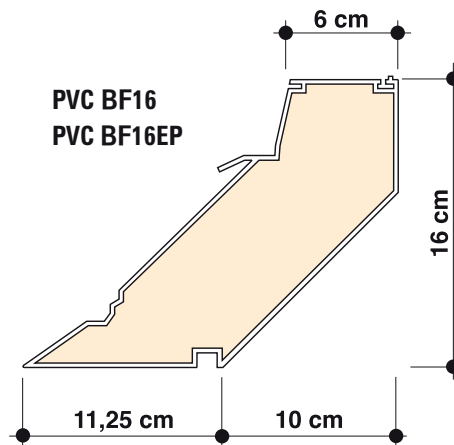
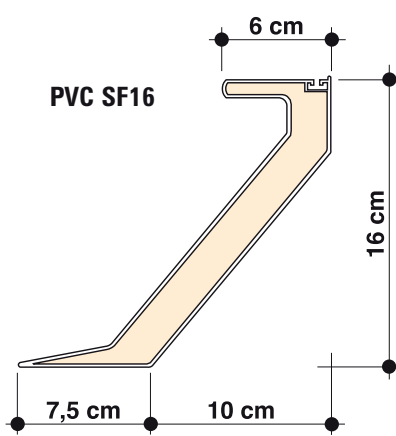


PVC curb BF16



PVC curb R016

## Information curbs PVC



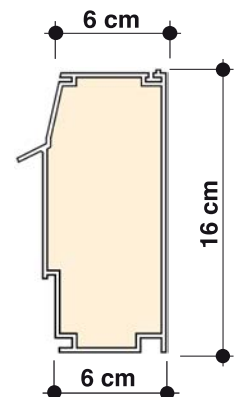
For good insulation the PVC curbs are double skinned and can be provided with extra EPS insulation. For optimum connection with the roof the outside of the curb is rough. The PVC curbs are completely recyclable.

Standard versions type:


- SF16 (small flange) = height 16 cm = air isolated = thick 25 mm
- BF16 = height 16 cm = air isolated = thick 70 mm
- BF16EP = height 16 cm = EPS isolated = thick 70 mm
- R016 = height 16 cm = air isolated = thick 70 mm
- R016E = height 16 cm = EPS isolated = thick 70 mm

**PVC R016/OS**  
**PVC R016EP/OS**


PVC curb adaptors R016/OS and R016EP/OS = PVC curbs R016 and R016EP without flange




# Curbs PVC sloping model, vertical model and PVC curb adaptor



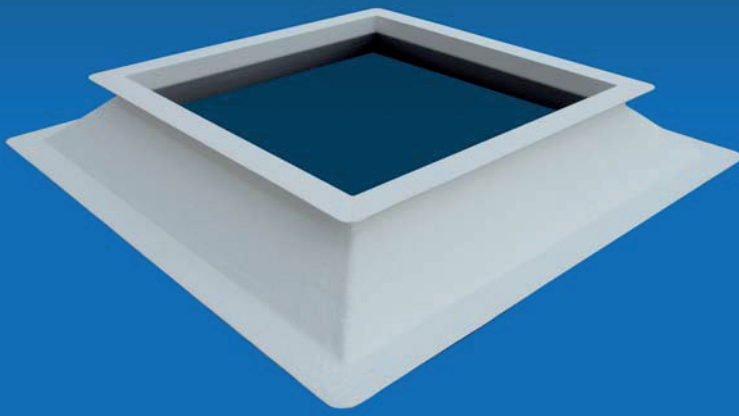
Daylight size D in cm	Roof opening size D + 20 cm	PVC sloping model		
		SF16 small flange air isolated	BF16 air isolated	BF16EP EPS
30 x 30	50 x 50	152	205	225
40 x 40	60 x 60	159	213	232
50 x 50	70 x 70	164	236	258
55 x 55	75 x 75	174	239	260
60 x 60	80 x 80	179	255	278
70 x 70	90 x 90	211	300	325
75 x 75	95 x 95	219	316	344
80 x 80	100 x 100	224	328	357
90 x 90	110 x 110	245	347	379
100 x 100	120 x 120	255	367	400
105 x 105	125 x 125	270	391	428
110 x 110	130 x 130	274	395	432
120 x 120	140 x 140	295	422	462
130 x 130	150 x 150	318	456	497
140 x 140	160 x 160	347	488	534
150 x 150	170 x 170	369	522	572
160 x 160	180 x 180	401	561	613
180 x 180	200 x 200	450	630	688
200 x 200	220 x 220	513	674	738
220 x 220	240 x 240	569	880	963
230 x 230	250 x 250	588	919	1007
250 x 250	270 x 270	633	999	1091
30 x 80	50 x 100	166	239	260
30 x 130	50 x 150	224	336	369
40 x 70	60 x 90	166	239	260
40 x 100	60 x 120	211	299	324
40 x 190	60 x 210	287	430	470
50 x 100	70 x 120	211	307	336
50 x 110	70 x 130	224	316	344
60 x 90	80 x 110	211	307	336
60 x 130	80 x 150	250	365	399
60 x 180	80 x 200	300	431	471
70 x 100	90 x 120	228	334	364
70 x 130	90 x 150	255	369	402
75 x 125	95 x 145	255	388	425
75 x 175	95 x 195	311	449	490
80 x 130	100 x 150	270	379	413
80 x 160	100 x 180	295	449	490
80 x 180	100 x 200	318	461	506
80 x 220	100 x 240	369	530	579
80 x 230	100 x 250	384	546	599
80 x 250	100 x 270	410	610	666
80 x 280	100 x 300	451	637	698
90 x 120	110 x 140	270	394	431
90 x 150	110 x 170	295	443	486
90 x 180	110 x 200	334	473	516
100 x 130	120 x 150	287	406	445
100 x 150	120 x 170	311	451	492
100 x 160	120 x 180	318	459	501
100 x 190	120 x 210	361	517	565
100 x 200	120 x 220	369	530	579
100 x 220	120 x 240	401	567	620
100 x 230	120 x 250	406	579	635
100 x 250	120 x 270	426	609	665
100 x 280	120 x 300	466	631	689
105 x 230	125 x 250	410	633	690
120 x 150	140 x 170	334	511	558
120 x 180	140 x 200	369	530	579
120 x 210	140 x 230	406	579	633
130 x 160	150 x 180	361	515	563
130 x 190	150 x 210	401	567	620
130 x 220	150 x 240	433	615	675
130 x 230	150 x 250	440	640	700
130 x 250	150 x 270	465	655	717
130 x 280	150 x 300	532	759	830
160 x 190	180 x 210	433	644	703
160 x 220	180 x 240	466	667	728
160 x 230	180 x 250	486	675	739
160 x 250	180 x 270	532	788	860
160 x 280	180 x 300	575	817	893
180 x 280	200 x 300	603	846	927



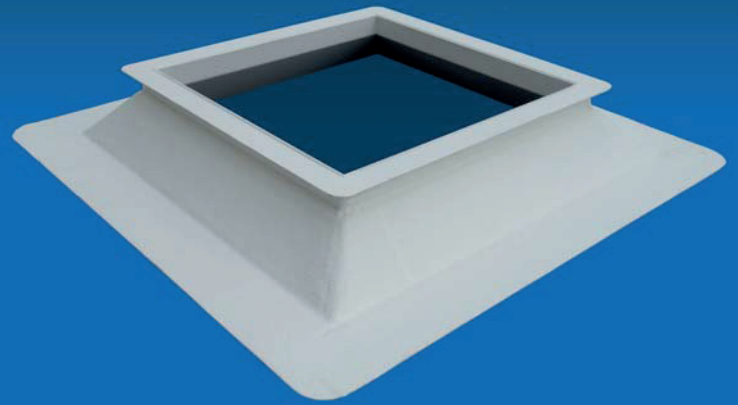
Daylight size D in cm	Roof opening size	PVC vertical model	
		RO16 air isolated	RO16EP EPS
30 x 30	30 x 30	198	217
40 x 40	40 x 40	204	224
50 x 50	50 x 50	271	295
55 x 55	55 x 55	280	305
60 x 60	60 x 60	282	309
70 x 70	70 x 70	302	332
75 x 75	75 x 75	346	376
80 x 80	80 x 80	351	383
90 x 90	90 x 90	364	398
100 x 100	100 x 100	409	449
105 x 105	105 x 105	440	480
110 x 110	110 x 110	443	486
120 x 120	120 x 120	462	507
130 x 130	130 x 130	487	531
140 x 140	140 x 140	534	584
150 x 150	150 x 150	585	640
160 x 160	160 x 160	626	684
180 x 180	180 x 180	683	746
200 x 200	200 x 200	736	805
220 x 220	220 x 220	865	946
230 x 230	230 x 230	896	981
250 x 250	250 x 250	957	1047
30 x 80	30 x 80	230	249
30 x 130	30 x 130	315	343
40 x 70	40 x 70	216	238
40 x 100	40 x 100	302	332
40 x 190	40 x 190	439	479
50 x 100	50 x 100	349	381
50 x 110	50 x 110	362	395
60 x 90	60 x 90	325	354
60 x 130	60 x 130	406	443
60 x 180	60 x 180	479	524
70 x 100	70 x 100	362	395
70 x 130	70 x 130	398	434
75 x 125	75 x 125	429	469
75 x 175	75 x 175	498	545
80 x 130	80 x 130	430	470
80 x 160	80 x 160	462	507
80 x 180	80 x 180	492	537
80 x 220	80 x 220	560	611
80 x 230	80 x 230	587	641
80 x 250	80 x 250	656	718
80 x 280	80 x 280	694	759
90 x 120	90 x 120	426	466
90 x 150	90 x 150	497	543
90 x 180	90 x 180	523	574
100 x 130	100 x 130	454	495
100 x 150	100 x 150	489	536
100 x 160	100 x 160	504	550
100 x 190	100 x 190	561	613
100 x 200	100 x 200	567	620
100 x 220	100 x 220	626	684
100 x 230	100 x 230	642	701
100 x 250	100 x 250	670	733
100 x 280	100 x 280	701	765
105 x 230	105 x 230	694	759
120 x 150	120 x 150	561	613
120 x 180	120 x 180	581	637
120 x 210	120 x 210	638	699
130 x 160	130 x 160	553	605
130 x 190	130 x 190	619	678
130 x 220	130 x 220	682	744
130 x 230	130 x 230	702	767
130 x 250	130 x 250	723	791
130 x 280	130 x 280	827	906
160 x 190	160 x 190	686	750
160 x 220	160 x 220	729	797
160 x 230	160 x 230	744	811
160 x 250	160 x 250	857	937
160 x 280	160 x 280	893	975
180 x 280	180 x 280	928	1013



Daylight size D in cm	Roof opening size	PVC curb adaptor	
		RO16/OS air isolated	RO16EP/OS EPS
30 x 30	30 x 30	198	217
40 x 40	40 x 40	204	224
50 x 50	50 x 50	271	295
55 x 55	55 x 55	280	305
60 x 60	60 x 60	282	309
70 x 70	70 x 70	302	332
75 x 75	75 x 75	346	376
80 x 80	80 x 80	351	383
90 x 90	90 x 90	364	398
100 x 100	100 x 100	409	449
105 x 105	105 x 105	440	480
110 x 110	110 x 110	443	486
120 x 120	120 x 120	462	507
130 x 130	130 x 130	487	531
140 x 140	140 x 140	534	584
150 x 150	150 x 150	585	640
160 x 160	160 x 160	626	684
180 x 180	180 x 180	683	746
200 x 200	200 x 200	736	805
220 x 220	220 x 220	865	946
230 x 230	230 x 230	896	981
250 x 250	250 x 250	957	1047
30 x 80	30 x 80	230	249
30 x 130	30 x 130	315	343
40 x 70	40 x 70	216	238
40 x 100	40 x 100	302	332
40 x 190	40 x 190	439	479
50 x 100	50 x 100	349	381
50 x 110	50 x 110	362	395
60 x 90	60 x 90	325	354
60 x 130	60 x 130	406	443
60 x 180	60 x 180	479	524
70 x 100	70 x 100	362	395
70 x 130	70 x 130	398	434
75 x 125	75 x 125	429	469
75 x 175	75 x 175	498	545
80 x 130	80 x 130	430	470
80 x 160	80 x 160	462	507
80 x 180	80 x 180	492	537
80 x 220	80 x 220	560	611
80 x 230	80 x 230	587	641
80 x 250	80 x 250	656	718
80 x 280	80 x 280	694	759
90 x 120	90 x 120	426	466
90 x 150	90 x 150	497	543
90 x 180	90 x 180	523	574
100 x 130	100 x 130	454	495
100 x 150	100 x 150	489	536
100 x 160	100 x 160	504	550
100 x 190	100 x 190	561	613
100 x 200	100 x 200	567	620
100 x 220	100 x 220	626	684
100 x 230	100 x 230	642	701
100 x 250	100 x 250	670	733
100 x 280	100 x 280	701	765
105 x 230	105 x 230	694	759
120 x 150	120 x 150	561	613
120 x 180	120 x 180	581	637
120 x 210	120 x 210	638	699
130 x 160	130 x 160	553	605
130 x 190	130 x 190	619	678
130 x 220	130 x 220	682	744
130 x 230	130 x 230	702	767
130 x 250	130 x 250	723	791
130 x 280	130 x 280	827	906
160 x 190	160 x 190	686	750
160 x 220	160 x 220	729	797
160 x 230	160 x 230	744	811
160 x 250	160 x 250	857	937
160 x 280	160 x 280	893	975
180 x 280	180 x 280	928	1013



Polyester curb H15



Polyester curb E15

## Information curbs polyester and other versions

### Polyester curbs

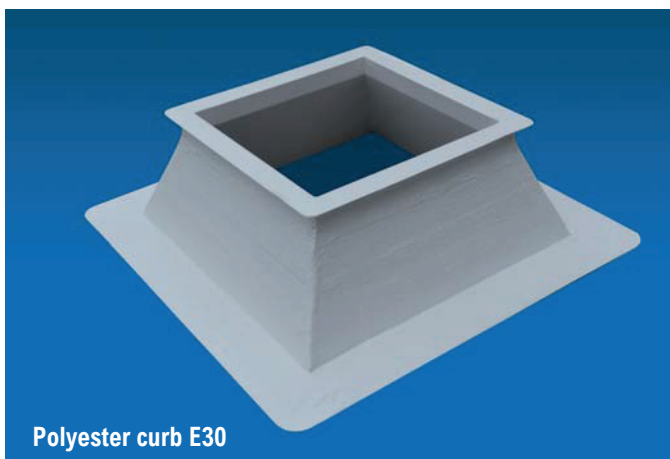
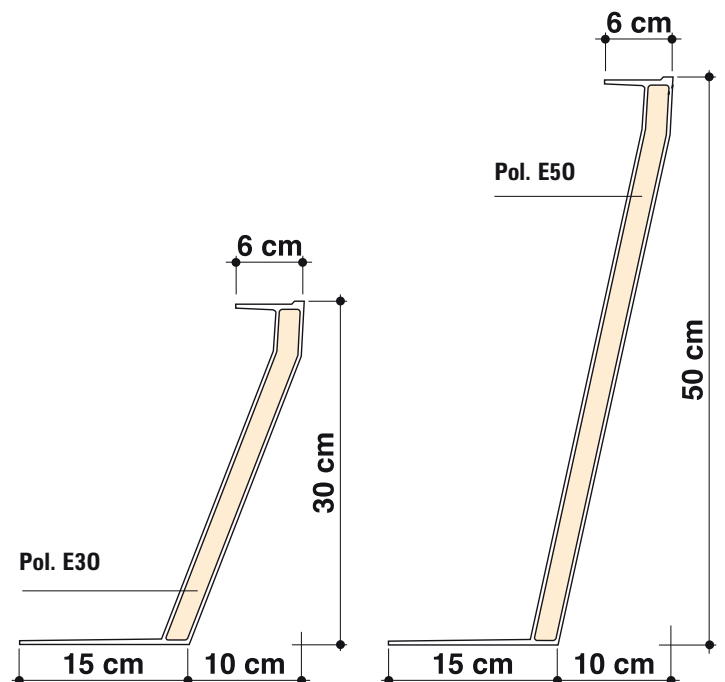
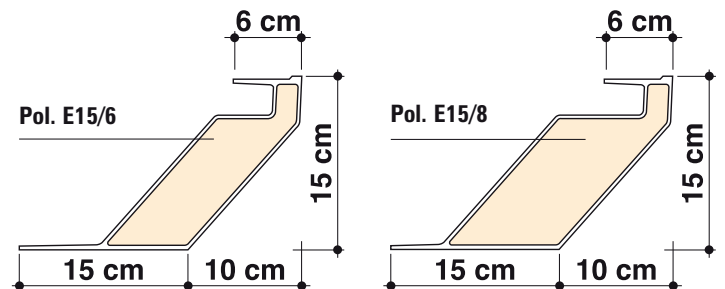
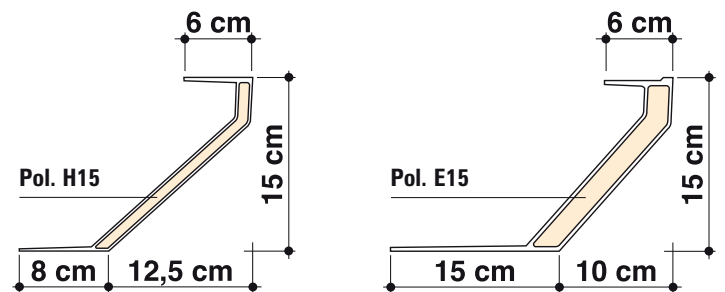
These polyester curbs are also double skinned with a filling of polyurethane. The outside is rough to create optimum fixing with the roof material and finished off with a weatherproof top coating.

Standard versions type:

- Type H15 (small flange) = Roof opening = Daylight size D + 25 cm
- E15 - E15/6 - E15/8 - E30 - E30/6 - E30/8 - E50 - E50/6 - E50/8 (wide flange) = Roof opening = Daylight size D + 20 cm

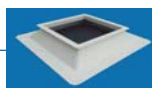
Special versions (prices on request):


- PVC strip (Trocal) for PVC roofing material
- Curbs with insulated under flange
- Curbs with different side insulation
- Northern light curbs
- Curbs with connection for wave- and other roof profiles
- PVC Roof size finishing
- Curbs with flange extension



Polyester curb E30

# Curbs polyester wide flange



 Daylight size D in cm	Roof opening size D + 20 cm	Polyester								
		E15 (Height 15 cm)			E30 (Height 30 cm)			E50 (Height 50 cm)		
		E15	E15/6 thickness 6 cm	E15/8 thickness 8 cm	E30	E30/6 thickness 6 cm	E30/8 thickness 8 cm	E50	E50/6 thickness 6 cm	E50/8 thickness 8 cm
30 x 30	50 x 50	288	356	373						
40 x 40	60 x 60	304	363	383	469	593	634	645	806	868
50 x 50	70 x 70	345	391	413	584	671	717	759	905	980
55 x 55	75 x 75	357	414	439	551	676	724	662	927	1008
60 x 60	80 x 80	371	451	478	574	743	794	798	1008	1091
70 x 70	90 x 90	427	527	556	656	855	914	904	1163	1258
75 x 75	95 x 95									
80 x 80	100 x 100	445	550	584	673	906	970	927	1230	1336
90 x 90	110 x 110	479	618	656	786	1015	1085	1149	1378	1496
100 x 100	120 x 120	553	693	728	846	1127	1202	1104	1529	1656
105 x 105	125 x 125	573	676	718	879	1191	1271	1168	1632	1763
110 x 110	130 x 130									
120 x 120	140 x 140	663	804	845	1004	1301	1389	1268	1805	1954
130 x 130	150 x 150	676	840	885	1014	1369	1462	1374	1859	2019
140 x 140	160 x 160				1262	1465	1569	1658	1994	2163
150 x 150	170 x 170				1177	1570	1678	1773	2132	2313
160 x 160	180 x 180	810	1017	1075	1247	1674	1787	1618	2274	2467
180 x 180	200 x 200	936	1142	1209	1434	1881	2007	1869	2547	2762
200 x 200	220 x 220	1042	1318	1387	1596	2152	2290	2086	2917	3149
220 x 220	240 x 240									
230 x 230	250 x 250	1354	1514	1591	2149	2469	2627	2823	3350	3615
250 x 250	270 x 270									
30 x 80	50 x 100	343	414	439	553	676	724	720	927	1008
30 x 130	50 x 150	445	550	584	714	906	970	927	1230	1336
40 x 70	60 x 90	343	414	439	521	676	724	720	927	1008
40 x 100	60 x 120	427	527	556	656	855	914			
40 x 190	60 x 210									
50 x 100	70 x 120									
50 x 110	70 x 130	490	550	584						
60 x 90	80 x 110									
60 x 130	80 x 150	545	656	693	872	1075	1149			
60 x 180	80 x 200									
70 x 100	90 x 120	469	589	621	720	962	1028	990	1310	1423
70 x 130	90 x 150									
75 x 125	95 x 145									
75 x 175	95 x 195									
80 x 130	100 x 150	570	676	718	819	1110	1191	1070	1507	1640
80 x 160	100 x 180				1004	1301	1389			
80 x 180	100 x 200	663	840	885	1020	1369	1462	1391	1859	2019
80 x 220	100 x 240	781	961	1013	1209	1570	1678	1561	2132	2313
80 x 230	100 x 250	804	990	1044	1308	1625	1734	1691	2202	2386
80 x 250	100 x 270									
80 x 280	100 x 300	942	1142	1209	1439	1881	2007	1879	2547	2762
90 x 120	110 x 140									
90 x 150	110 x 170									
90 x 180	110 x 200									
100 x 130	120 x 150	602	739	780	980	1214	1299	1271	1651	1795
100 x 150	120 x 170									
100 x 160	120 x 180	663	840	885	1059	1369	1462	1374	1859	2019
100 x 190	120 x 210				1167	1515	1620			
100 x 200	120 x 220	781	961	1013	1209	1570	1678	1561	2132	2313
100 x 220	120 x 240	835	1017	1075	1247	1674	1787	1681	2274	2467
100 x 230	120 x 250	864	1056	1111	1342	1728	1845	1744	2341	2535
100 x 250	120 x 270	911	1114	1177	1405	1826	1949	1782	2484	2690
100 x 280	120 x 300	1073	1210	1275	1541	1978	2112	2246	2687	2907
105 x 230	125 x 250	869	1072	1131	1374	1751	1871	1825	2377	2576
120 x 150	140 x 170									
120 x 180	140 x 200							1773	2132	2313
120 x 210	140 x 230	944	1056	1111						
130 x 160	150 x 180	759	930	980	1166	1515	1620	1506	2061	2237
130 x 190	150 x 210	835	1017	1075	1284	1674	1787	1659	2274	2467
130 x 220	150 x 240	936	1114	1177	1459	1826	1949	1819	2484	2690
130 x 230	150 x 250	944	1142	1209	1478	1881	2007	2127	2547	2762
130 x 250	150 x 270	962	1210	1275	1541	1978	2112	2008	2687	2907
130 x 280	150 x 300	1093	1389	1462	1771	2282	2422	2611	3081	3319
160 x 190	180 x 210									
160 x 220	180 x 240	991	1210	1275	1522	1978	2112	1996	2687	2907
160 x 230	180 x 250	1038	1239	1308	1565	2026	2163	2297	2750	2980
160 x 250	180 x 270	1102	1299	1371	1695	2132	2273	2237	2891	3129
160 x 280	180 x 300	1233	1396	1470	1891	2288	2439	2467	3205	3457
180 x 280	200 x 300	1290	1514	1591	2149	2469	2627	2823	3350	3615


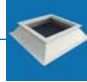



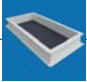
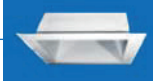
SMART WITH DAYLIGHT



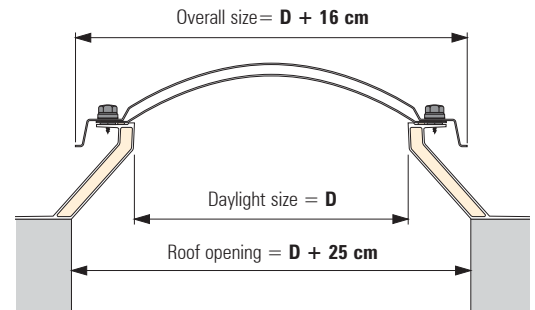
# Curbs polyester H15

## Roofsize finishing and curb adaptors

		
Daylight size D in cm	Roof opening size D + 25 cm	Polyester Curb H15 small flange height 15 cm
30 x 30	55 x 55	207
40 x 40	65 x 65	257
50 x 50	75 x 75	293
55 x 55	80 x 80	311
60 x 60	85 x 85	325
70 x 70	95 x 95	381
75 x 75	100 x 100	400
80 x 80	105 x 105	411
90 x 90	115 x 115	445
100 x 100	125 x 125	464
105 x 105	130 x 130	476
110 x 110	135 x 135	497
120 x 120	145 x 145	546
130 x 130	155 x 155	593
140 x 140	165 x 165	673
150 x 150	175 x 175	714
160 x 160	185 x 185	723
180 x 180	205 x 205	855
200 x 200	225 x 225	997
220 x 220	245 x 245	1259
230 x 230	255 x 255	
250 x 250	275 x 275	
30 x 80	55 x 105	327
30 x 130	55 x 155	422
40 x 70	65 x 95	304
40 x 100	65 x 125	381
40 x 190	65 x 215	
50 x 100	75 x 125	400
50 x 110	75 x 135	
60 x 90	85 x 115	433
60 x 130	85 x 155	478
60 x 180	85 x 205	
70 x 100	95 x 125	421
70 x 130	95 x 155	464
75 x 125	100 x 150	479
75 x 175	100 x 200	555
80 x 130	105 x 155	500
80 x 160	105 x 185	
80 x 180	105 x 205	635
80 x 220	105 x 245	663
80 x 230	105 x 255	687
80 x 250	105 x 275	749
80 x 280	105 x 305	809
90 x 120	115 x 145	522
90 x 150	115 x 175	574
90 x 180	115 x 205	645
100 x 130	125 x 155	521
100 x 150	125 x 175	569
100 x 160	125 x 185	593
100 x 190	125 x 215	676
100 x 200	125 x 225	695
100 x 220	125 x 245	763
100 x 230	125 x 255	
100 x 250	125 x 275	830
100 x 280	125 x 305	
105 x 230	130 x 255	
120 x 150	145 x 175	645
120 x 180	145 x 205	712
120 x 210	145 x 235	786
130 x 160	155 x 185	695
130 x 190	155 x 215	763
130 x 220	155 x 245	840
130 x 230	155 x 255	855
130 x 250	155 x 275	895
130 x 280	155 x 305	916
160 x 190	185 x 215	833
160 x 220	185 x 245	904
160 x 230	185 x 255	
160 x 250	185 x 275	1033
160 x 280	185 x 305	1114
180 x 280	205 x 305	

				
Daylight size D in cm	Polyester Curb adaptors height 15 cm	PVC Roofsize finishing height 60 cm	PVC Roofsize finishing height 100 cm	
30 x 30		390	520	
40 x 40	309	451	584	
50 x 50	348	499	657	
55 x 55		525	695	
60 x 60	380	550	731	
70 x 70	441	598	809	
75 x 75		632	860	
80 x 80	466	676	899	
90 x 90	551	754	992	
100 x 100	577	811	1060	
105 x 105	614	875	1117	
110 x 110		904	1165	
120 x 120		982	1234	
130 x 130	701	1041	1375	
140 x 140		1116	1434	
150 x 150		1184	1589	
160 x 160	855	1253	1690	
180 x 180	964	1447	1922	
200 x 200	1177	1575	2187	
220 x 220		1760	2444	
230 x 230		1872	2565	
250 x 250		2029	2765	
30 x 80	350	558	724	
30 x 130	461	694	962	
40 x 70	350	558	724	
40 x 100		656	837	
40 x 190		918	945	
50 x 100		632	860	
50 x 110				
60 x 90	441	632	860	
60 x 130	553			
60 x 180				
70 x 100	497	725	978	
70 x 130		811	1060	
75 x 125		811	1060	
75 x 175		1013	1273	
80 x 130	570	875	1117	
80 x 160		982	1234	
80 x 180	701	1041	1375	
80 x 220	808	1184	1589	
80 x 230	833	1293	1662	
80 x 250		1355	1749	
80 x 280	1015	1434	1905	
90 x 120		875	1117	
90 x 150				
90 x 180				
100 x 130	617	918	945	
100 x 150				
100 x 160	703	1041	1375	
100 x 190		1224	1648	
100 x 200	808	1184	1577	
100 x 220	855	1251	1679	
100 x 230	885	1321	1783	
100 x 250	935	1418	1909	
100 x 280		1543	2050	
105 x 230	904	1346	1802	
120 x 150				
120 x 180		1184	1577	
120 x 210				
130 x 160	780	1224	1648	
130 x 190	855	1251	1679	
130 x 220	990	1418	1884	
130 x 230	964	1434	1905	
130 x 250	1017	1543	2065	
130 x 280		1679	2210	
160 x 190		1418	1884	
160 x 220		1543	2065	
160 x 230		1598	2173	
160 x 250	1180	1646	2231	
160 x 280		1760	2444	
180 x 280				

### Roof opening with polyester curb H15



### Polyester curb adaptors for renovation

In case of existing situations polyester curb adaptors can be mounted on existing curbs. As a result, the curb height increases 15 cm, but other heights are also available on request.

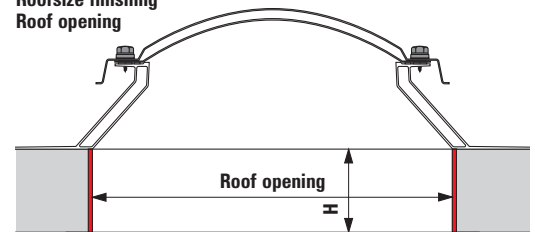
**Special for renovation**

Existing skydome and curb can be reused and installed in case of renovation. You also can built-in a ventilation system on the existing dome, even expand this to a Smoke and Heat exhaust ventilation system.

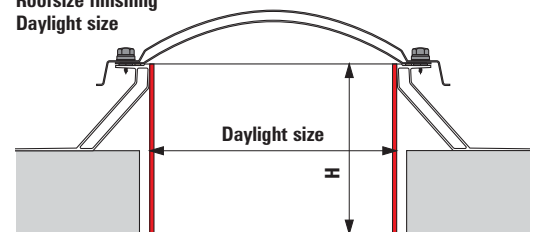
### PVC Roofsize finishing

- Material Hard PVC
- Color white (RAL 9010) with bottom flange of 5 cm (paintable).
- Keep the roof opening a few cm larger than the daylight size of the finishing. Keep the inside daylight size of the curb minimal to mentioned sizes.
- Not to be used in ventilation units without adjustment
- Other sizes/heights available on request
- Also available in round forms (see page 17)

### Roofsize finishing Roof opening



### Roofsize finishing Daylight size





# Round skydomes acrylic (AC) and polycarbonate (PC)

Daylight size D in cm	Acrylic (AC)					Polycarbonate (PC)						ISO-Dome
	1-S	2-S	3-S	4-S	6-S	1-S	2-S	2-S	3-S	3-S	4-S	
Ø 40	131	170	216	260	290	169	201	255	257	270	312	327
Ø 50	156	216	284	349	382	188	257	289	333	345	404	430
Ø 60	185	246	317	386	426	218	270	317	342	350	410	457
Ø 70	199	298	401	506	541	232	331	398	432	471	534	582
Ø 80	212	358	516	676	696	366	466	544	569	608	780	819
Ø 90	248	413	587	765	793	420	574	640	743	752	910	970
Ø 100	286	468	656	846	884	466	630	748	782	865	941	1061
Ø 120	410	666	942	1216	1195	698	924	1029	1163	1187	1404	1468
Ø 130	488	738	1001	1267	1269	761	1030	1096	1323	1351	1618	1583
Ø 160	863	1212	1579	1945		1046	1541	2013	2066	2404	2591	
Ø 180	997	1633	2333	3035		1401	2035	2498	2672	3007	3307	
Ø 200	1407	2384	3463	4543		on request	on request	on request	on request	on request	on request	
Ø 220	on request	on request	on request	on request		on request	on request	on request	on request	on request	on request	
Ø 230	on request	on request	on request	on request								
Ø 250	on request	on request	on request	on request								

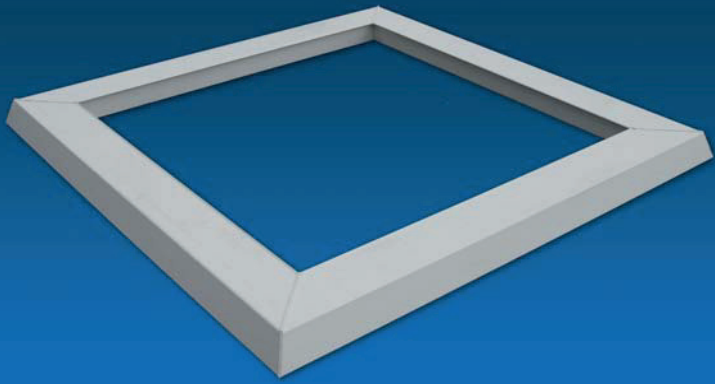
# Round curbs, curb adaptors, roofsize finishing and ventilation frames

Daylight size D in cm	Roof opening D + 20 cm	E15 (Height 15 cm)			E30 (Height 30 cm)			E50 (Height 50 cm)		
		E15	E15/6 thickness 6 cm	E15/8 thickness 8 cm	E30	E30/6 thickness 6 cm	E30/8 thickness 8 cm	E50	E50/6 thickness 6 cm	E50/8 thickness 8 cm
Ø 40	Ø 60	328	396	413	522	587	601	682	1093	1158
Ø 50	Ø 70	358	450	476	551	671	686	965	1114	1189
Ø 60	Ø 80	370	499	525	586	751	765	786	1135	1221
Ø 70	Ø 90	429	545	573	682	808	823	892	1204	1299
Ø 80	Ø 100	450	577	607	708	848	866	916	1274	1378
Ø 90	Ø 110	499	646	682	914	954	971	1196	1429	1543
Ø 100	Ø 120	551	723	762	879	1058	1080	1164	1584	1709
Ø 120	Ø 140	676	820	866	1071	1207	1230	1521	1812	1961
Ø 130	Ø 150	724	872	918	1188	1279	1305	1386	1922	2084
Ø 160	Ø 180	811	1069	1126	1308	1569	1600	1691	2356	2546
Ø 180	Ø 200	942	1220	1281	1506	1762	1797	2035	2672	2884
Ø 200	Ø 220	1126	1350	1419	1757	1955	1996	2328	2965	3197
Ø 230	Ø 250	1396	1557	1635	2164	2257	2301	3080	3605	3870
Ø 250	Ø 270				2704	2804	2849			

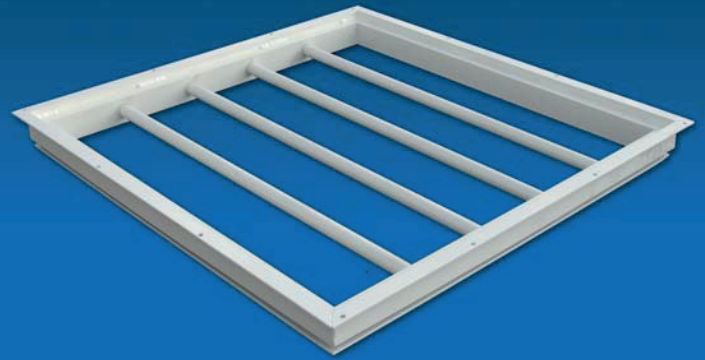
Daylight size D in cm	Roof opening D + 25 cm	Polyester Curb H15 small flange height 15 cm
Ø 40	Ø 65	282
Ø 50	Ø 75	318
Ø 60	Ø 85	343
Ø 70	Ø 95	401
Ø 80	Ø 105	425
Ø 90	Ø 115	462
Ø 100	Ø 125	482
Ø 120	Ø 145	591
Ø 130	Ø 155	635
Ø 160	Ø 185	751
Ø 180	Ø 205	862
Ø 200	Ø 225	995
Ø 220	Ø 245	1264
Ø 230	Ø 255	
Ø 250	Ø 275	

Daylight size D in cm	Polyester Curb adaptors height 15 cm		PVC Roofsize finishing	
	height 60 cm	height 100 cm	height 60 cm	height 100 cm
Ø 40	341		447	638
Ø 50			514	689
Ø 60			579	744
Ø 70	461		633	791
Ø 80			689	908
Ø 90			762	1012
Ø 100	611		837	1111
Ø 120			1008	1273
Ø 130	734		1086	1439
Ø 160	904		1347	1789
Ø 180	1089		1646	2188
Ø 200			1825	2429
Ø 220	1273		1913	2649
Ø 230	1392		2007	2756
Ø 250			2101	2970

Daylight size D in cm	Ventilation frame Polyester	
	solo	tandem
Ø 40	353	
Ø 50		
Ø 60	411	
Ø 70	497	
Ø 80	545	
Ø 90		
Ø 100	638	
Ø 120		
Ø 130		779
Ø 160		923
Ø 180		1015
Ø 200		1111
Ø 220		
Ø 230		
Ø 250		



PVC ventilation frame



Anti burglar bar / safety grid

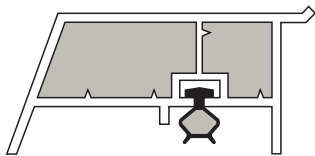


Roof access hatch with ventilation, spindle with pull and release string

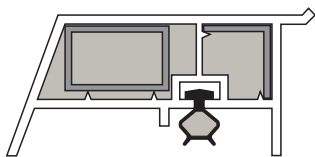


Anti burglar bar / safety grid mounted

## Information ventilation frames, anti burglar bars / safety grids



PVC standard



PVC reinforced

### PVC ventilation frames

In addition to good insulation, fresh air is necessary for a good living and working climate. Ventilation through the roof is the most efficient way to remove heat from the home in the summer.

To open a Megalux®-skydome you need to install a ventilation frame. Megalux®-ventilation frames are installed between the skydome and the curb. This will provide a perfect thermal break and watertight closing. These are automatically reinforced for ventilation purposes and for roof access and smoke and heat extraction systems.

Ventilation can be performed manually using a spindle with crank handle or electrically by means of an electric motor or chain motor.

### Anti burglar bars / safety grids (with SKG KOMO attest)

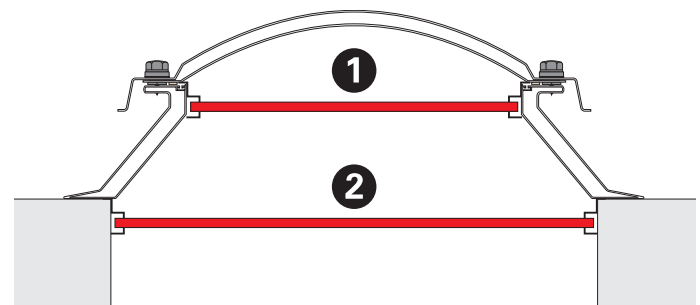
For extra security against falling through and burglary the Megalux®-anti burglar bar / safety grid can be supplied.

The anti burglar bar / safety grid can be mounted in the daylight size or in the roof opening. Megalux®-anti burglar bars / safety grids are SKG certified and thereby qualified to the requirements of Building and Police regulations.

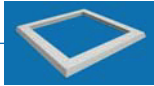
**Anti burglar bars / safety grids cannot be used in combination with roof access hatches.**

### Anti burglar bar / safety grid

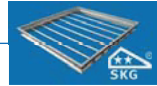
- 1) for mounting in the daylight size
- 2) for mounting in the roof opening



# Ventilation frames, anti burglar bars / safety grids

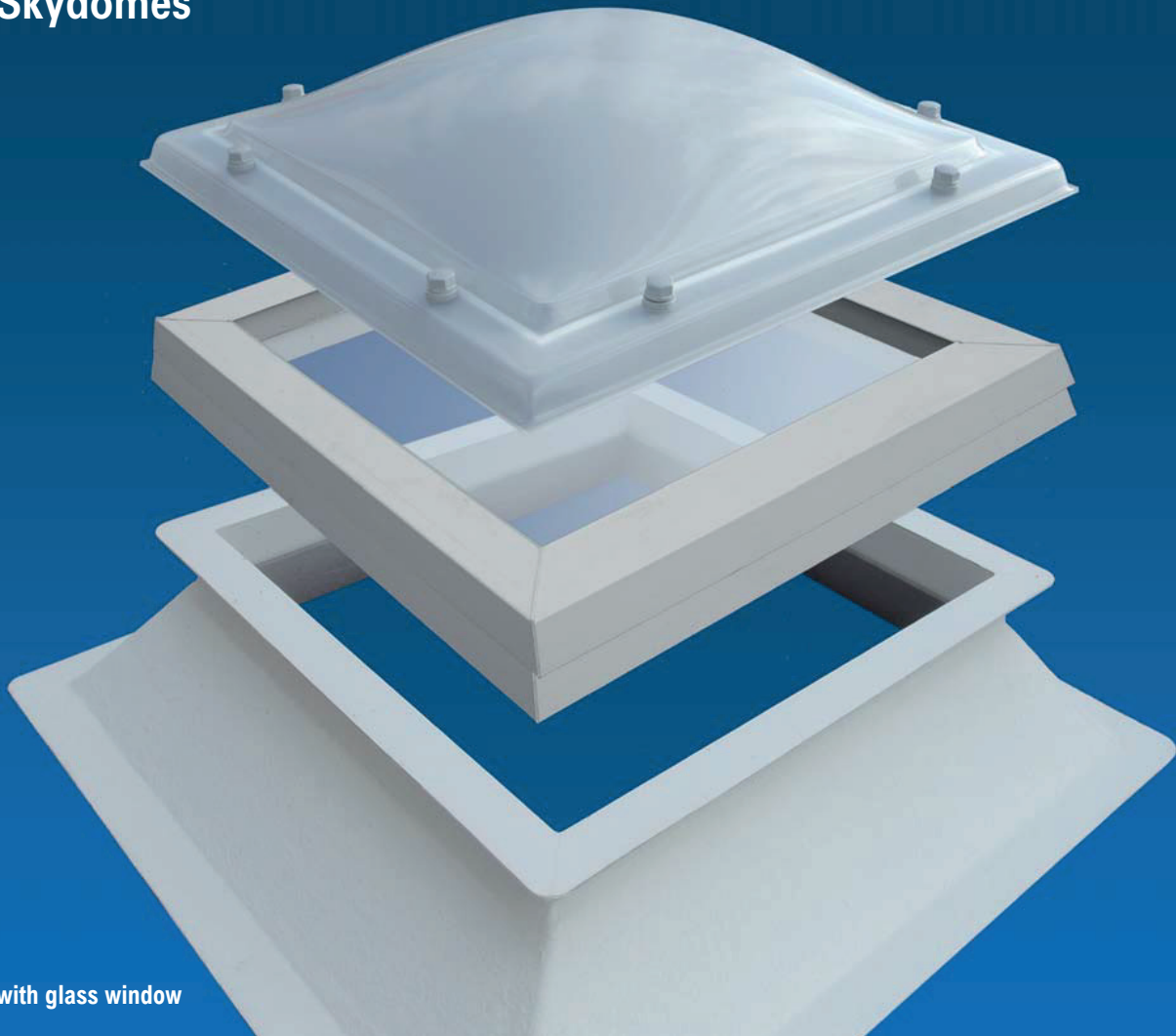


Daylight size D in cm	Ventilation frame PVC	
	solo	tandem
30 x 30		
40 x 40	183	
50 x 50	198	
55 x 55	205	
60 x 60	221	
70 x 70	230	
75 x 75	234	
80 x 80	239	
90 x 90	254	
100 x 100	264	
105 x 105	289	
110 x 110	315	
120 x 120	333	349
130 x 130	344	358
140 x 140		372
150 x 150		383
160 x 160		413
180 x 180		431
200 x 200		476
220 x 220		575
230 x 230		600
250 x 250		656
30 x 80	202	
30 x 130	231	
40 x 70	202	
40 x 100	230	
40 x 190	285	300
50 x 100	234	
50 x 110	239	
60 x 90	215	
60 x 130	256	273
60 x 180	302	317
70 x 100	249	
70 x 130	264	281
75 x 125	264	281
75 x 175	314	330
80 x 130	280	294
80 x 160	333	349
80 x 180	344	359
80 x 220	375	393
80 x 230	383	399
80 x 250		418
80 x 280		431
90 x 120	280	294
90 x 150	318	334
90 x 180	349	364
100 x 130	285	300
100 x 150	314	330
100 x 160	333	349
100 x 190	359	373
100 x 200	364	383
100 x 220		403
100 x 230		410
100 x 250		438
100 x 280		454
105 x 230		426
120 x 150	349	364
120 x 180	372	388
120 x 210		419
130 x 160		388
130 x 190		406
130 x 220		426
130 x 230		431
130 x 250		464
130 x 280		489
160 x 190		431
160 x 220		452
160 x 230		461
160 x 250		489
160 x 280		516
180 x 280		539

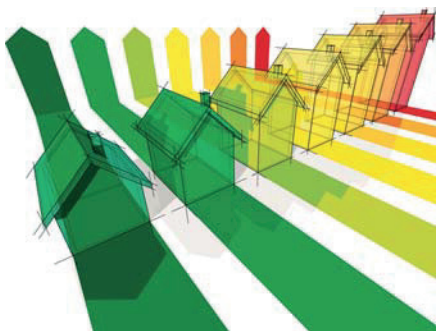


Daylight size D in cm	Anti burglar bar / safety grid	
	aluminium	white RAL 9010
30 x 30	353	398
40 x 40	363	401
50 x 50	379	429
55 x 55	389	447
60 x 60	401	460
70 x 70	431	517
75 x 75	447	542
80 x 80	466	577
90 x 90	537	676
100 x 100	570	738
105 x 105	624	811
110 x 110	694	919
120 x 120	726	972
130 x 130	817	1101
140 x 140	857	1215
150 x 150	951	1329
160 x 160	992	1426
180 x 180	1132	1681
200 x 200	on request	on request
220 x 220	on request	on request
230 x 230	on request	on request
250 x 250	on request	on request
30 x 80	376	431
30 x 130	548	624
40 x 70	401	471
40 x 100	456	535
40 x 190	793	926
50 x 100	475	572
50 x 110	525	621
60 x 90	479	575
60 x 130	608	741
60 x 180	783	1000
70 x 100	512	634
70 x 130	632	782
75 x 125	634	793
75 x 175	816	1042
80 x 130	649	839
80 x 160	823	1064
80 x 180	835	1081
80 x 220	967	1266
80 x 230	1019	1340
80 x 250	1086	1444
80 x 280	1204	1579
90 x 120	655	845
90 x 150	737	983
90 x 180	857	1141
100 x 130	690	916
100 x 150	757	1014
100 x 160	811	1094
100 x 190	933	1254
100 x 200	948	1308
100 x 220	1016	1394
100 x 230	1070	1466
100 x 250	1140	1590
100 x 280	1258	1751
105 x 230	1136	1553
120 x 150	870	1191
120 x 180	962	1340
120 x 210	1107	1537
130 x 160	913	1043
130 x 190	1056	1493
130 x 220	1201	1693
130 x 230	1216	1727
130 x 250	1296	1862
130 x 280	1444	2065
160 x 190	1148	1673
160 x 220	1304	1906
160 x 230	1316	1939
160 x 250	1401	
160 x 280	1557	
180 x 280	1713	

# Hybrid Skydomes



Plastic dome with glass window



With Megalux®-daylight systems to a better performance

## Information skydomes Hybride

### Hybrid daylight systems, smart with daylight!

Energy saving is getting more and more important. Higher standards are required for insulation and ventilation of new buildings. This reflects in the all designs of new projects. Nowadays the U-value standard is 2.2 for buildings and for building elements even a maximum U-value of 1.6.


By cleverly combining the various components from the Megalux®-skydome program, you can even achieve U-values of 0.4. You can achieve this result by combining a super-insulating skydome with extra insulation in the curb and a glass or ISO-PC window. You can also opt for other smart combinations and thus fulfill your own (residential) requirements.

You can also make existing skydomes more sustainable during renovation with the extra addition of a glass or ISO PC-window, which is easy to install between the existing dome and curb.

Megalux®-Hybrid skydomes are very maintenance-friendly.

On the outside they are self-cleaning like all plastic skydomes from the wide Megalux®-skydomes range. They are largely soundproof, burglar-resistant, fall-proof and have a perfect air and watertightness. A ready-to-use quality product whose colour, shape and the material of the parts are chosen by yourself. Then have it pre-assembled delivered for a perfect finish and quick assembly.

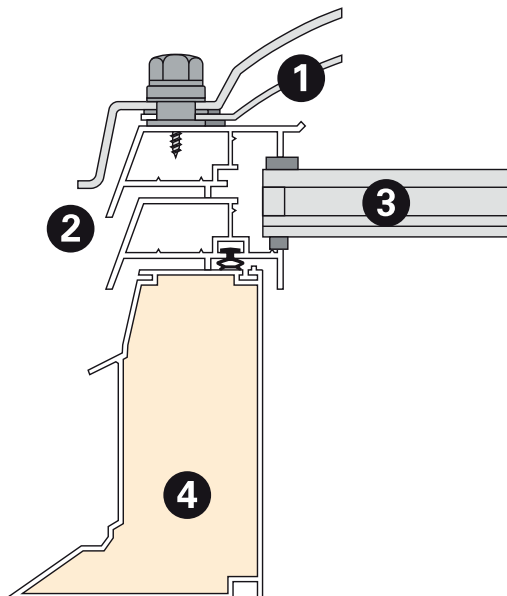
# Domes Hybride with curb vertical model and curb sloping model

 Daylight size D in cm	Glass-window separately*			Curb PVC vertical model**		Curb PVC sloping model**		Skydome**			
	Fixed version	Ventilation manual*	Ventilation electric*	Roof opening size in cm	RO16EP	Roof opening D + 20 cm	BF16EP	1-S PC	2-S PC/AC	3-S PC/AC/AC	4-S PC/AC/AC/AC
40 x 40	360			40 x 40	224	60 x 60	232	141	187	232	279
60 x 60	386	459	739	60 x 60	309	80 x 80	278	192	268	346	425
70 x 70	417	488	771	70 x 70	332	90 x 90	325	228	324	422	521
80 x 80	460	532	814	80 x 80	383	100 x 100	357	305	416	534	654
90 x 90	513	586	869	90 x 90	398	110 x 110	379	354	479	646	743
100 x 100	550	780	1222	100 x 100	449	120 x 120	400	404	530	707	795
120 x 120	704	933	1375	120 x 120	507	140 x 140	462	579	770	991	1172
130 x 130	832	1061	1502	130 x 130	531	150 x 150	497	660	873	1123	1327
40 x 70	387	460	743	40 x 70	238	60 x 90	260	176	247	314	384
60 x 90	425	497	780	60 x 90	354	80 x 110	336	284	369	466	566
60 x 130	545	774	1216	60 x 130	445	80 x 150	399	366	511	662	811
70 x 100	492	564	846	70 x 100	395	90 x 120	364	336	434	573	641
80 x 130	604	834	1275	80 x 130	470	100 x 150	413	451	599	767	931

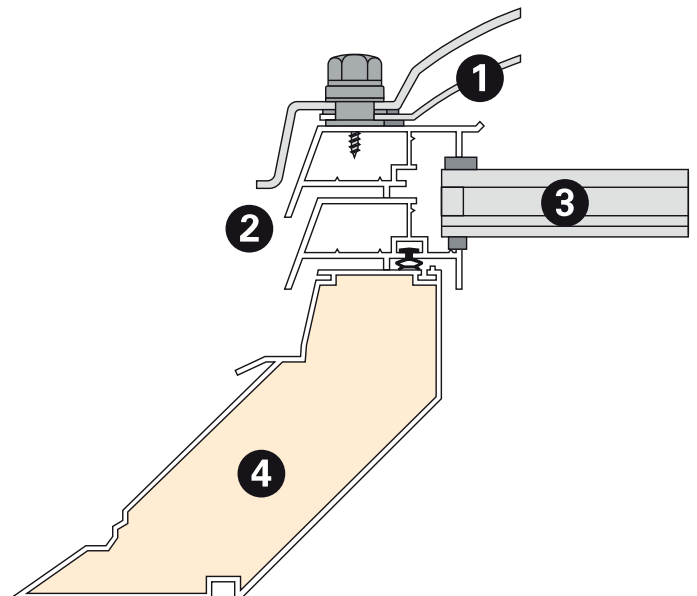
\* Skydome and curb not included

\*\* Alternative skydome and curb versions, see price list.

U-Wert (W/m <sup>2</sup> K)							
EN 1873:2014+A1:2016, EN 673, ISO10211							
	Curb PVC RO16EP		Curb PVC BF16EP	Glass-window+ dome 1-S	Glass-window+ dome 2-S	Glass-window+ dome 3-S	Glass-window+ dome 4-S
Glass-window HR ++, U <sub>g</sub>	1,00						
Curb PVC** 16EP, U <sub>r</sub>	0,61		0,59				
Glass-window with skydome, U <sub>t</sub>				0,95	0,81	0,71	0,63
Glass-window with curb PVC RO16EP and skydome, U <sub>rc</sub> (ref)				0,74	0,69	0,65	0,62
Glass-window with curb PVC BF16EP and skydome, U <sub>rc</sub> (ref)				0,73	0,68	0,64	0,61



- 1) Skydome
- 2) Dual PVC frame
- 3) Glass window
- 4) Curb PVC RO16EP



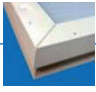
- 1) Skydome
- 2) Dual PVC frame
- 3) Glass window
- 4) Curb PVC BF16EP



ISO-PC window  
and polyester curb



# Megalux® ISO-PC window



Daylight size D in cm	Fixed version*
40 x 40	408
50 x 50	433
55 x 55	449
60 x 60	461
70 x 70	489
75 x 75	506
80 x 80	522
90 x 90	600
100 x 100	637
105 x 105	657
110 x 110	697
120 x 120	737
30 x 80	441
30 x 130	520
40 x 70	445
40 x 100	505
40 x 190	658
50 x 100	522
50 x 110	536
60 x 90	527
60 x 130	603
60 x 180	703
70 x 100	560
70 x 130	627
75 x 125	629
75 x 175	732
80 x 130	669
80 x 160	720
80 x 180	752
80 x 220	841
80 x 230	857
80 x 250	892
80 x 280	943
90 x 120	656
90 x 150	731
90 x 180	783
100 x 130	712
100 x 150	774
100 x 160	791
100 x 190	849
100 x 200	889
100 x 220	927
100 x 230	945
100 x 250	984
100 x 280	1040
105 x 230	960
120 x 150	822
120 x 180	883
120 x 210	966

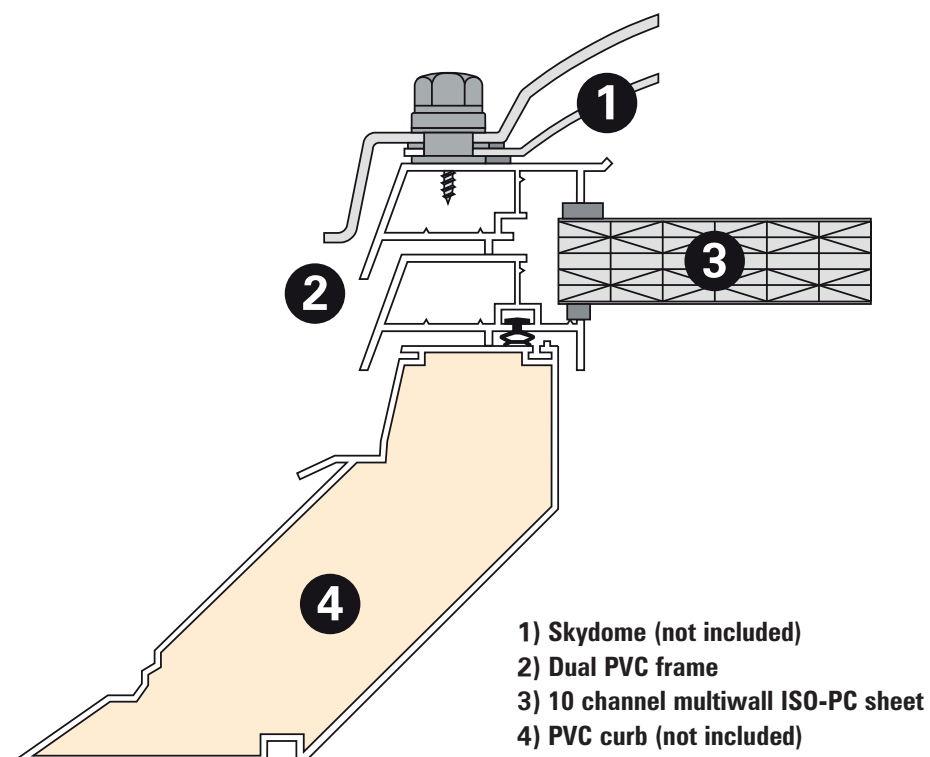
\* Skydome and curb not included

**Megalux® ISO-PC** windows has a very high insulation value comparable to 3-layered glass.

The ISO window is made of a dual PVC window-frame, equipped with a 10 channel multi-wall PC sheet 32 mm thick. Due to its light weight, the most skydome versions are possible.

It is also very suitable to be placed between the existing skydome with a curb. You can directly improve the existing situation spectacularly. Because the actual window size has the same size as the daylight size, you have up to 40% more daylight input than with many other glass brands with the comparable roof opening sizes. Therefore, you can choose a smaller size to achieve the same result.

- **Very high insulation value** comparable to triple-glass windows.
- Up to **40% more daylight input** than many other manufactures.
- Many available sizes to choose from.
- Easy to handle due to light weight.
- Easy to assemble on almost all existing brands' upstands.
- For ventilated versions you can use ventilation units prices on page 30.
- Non-transparent, allowing less rapid heating (more energy neutral).
- Always has to be applied only in combination with a dome on top.

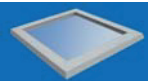



- 1) Skydome (not included)
- 2) Dual PVC frame
- 3) 10 channel multiwall ISO-PC sheet
- 4) PVC curb (not included)



# Glass window



# Megalux® Glass-window

 Glass-window square				
 Daylight size D in cm	Fixed version*	Manual operated version*	Electrically operated version*	
40 x 40	360			
60 x 60	386	459	739	S
70 x 70	417	488	771	S
80 x 80	460	532	814	S
90 x 90	513	586	869	S
100 x 100	550	780	1222	T
120 x 120	704	933	1375	T
130 x 130	832	1061	1502	T
40 x 70	387	460	743	S
60 x 90	425	497	780	S
60 x 130	545	774	1216	T
70 x 100	492	564	846	S
80 x 130	604	834	1275	T

 Glass-window round	
 Daylight size D in cm	Fixed version*
Ø 40	949
Ø 50	1030
Ø 60	1108
Ø 70	1205
Ø 80	1299
Ø 100	1810
Ø 130	2620

\* Skydome and curb not included

\* Hinges are standard mounted at the longest side of the unit by rectangular versions

S = solo. T = tandem.

The **Megalux® Glass-window** has a very high thermal insulation, but above all it has a very high sound insulation. There is little to no noise coming through thanks to the combination of Megalux® Glass-window with a Megalux®-skydome(s).

The window is made of double PVC frame with HR++ double layered insulated glass.

The glass window is also very suitable for placing between the existing skydome and curb. You can therefore immediately improve the existing situation spectacularly.

Because the actual window size is the same as the daylight size, you have up to 40% more daylight input than with many other glass brands with the comparable roof opening sizes. So you can achieve the same result with a smaller variant.

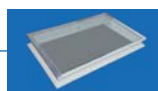
## - Very high insulation value.

- Up to **40% more daylight input** than many other manufactures.
- Also very suitable for renovation without major modifications to the roof.
- Easy to assemble on almost all existing brands' curbs.
- Also available in opaque with opal skydome for less rapid warming (Energy neutralizer).
- Electric ventilating systems are equipped with a chain motor.
- Always must to be installed only in combination with a skydome on top.



SMART WITH DAYLIGHT

# Megalux® Glass-Unit

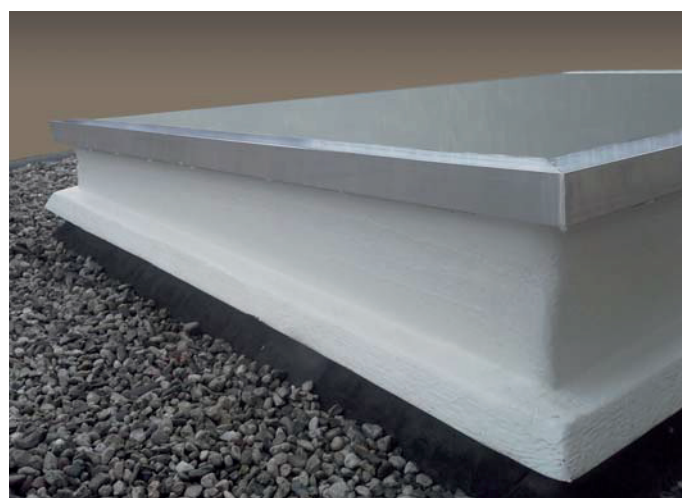


Daylight size D in cm	Roof opening size in cm	Polyester E30 height 30 cm	Extra cost adaptor	Extra cost wall connection
40 x 40	40 x 40	1167	114	325
50 x 50	50 x 50	1238	114	325
60 x 60	60 x 60	1452	114	325
70 x 70	70 x 70	1630	114	424
80 x 80	80 x 80	1684	134	424
90 x 90	90 x 90	1988	151	424
100 x 100	100 x 100	2201	170	424
105 x 105	105 x 105	2319	170	424
120 x 120	120 x 120	2641	190	424
130 x 130	130 x 130	2864	210	424
40 x 70	40 x 70	1299	132	424
70 x 100	70 x 100	1772	147	424
80 x 130	80 x 130	2228	170	424
100 x 130	100 x 130	2478	183	424
100 x 160	100 x 160	2803	228	520
100 x 200	100 x 200	3239	239	650

**Megalux® Glass-Unit** is a completely pre-assembled daylight system unit, consisting of a polyester curb with integrated HR++ glass plate. The curb has a slight slope for sufficient water drainage and is filled with 40 mm PUR insulation.

The whole unit is finished with aluminum frames. With the standard flange the whole unit can be installed quickly and easily on the roof.

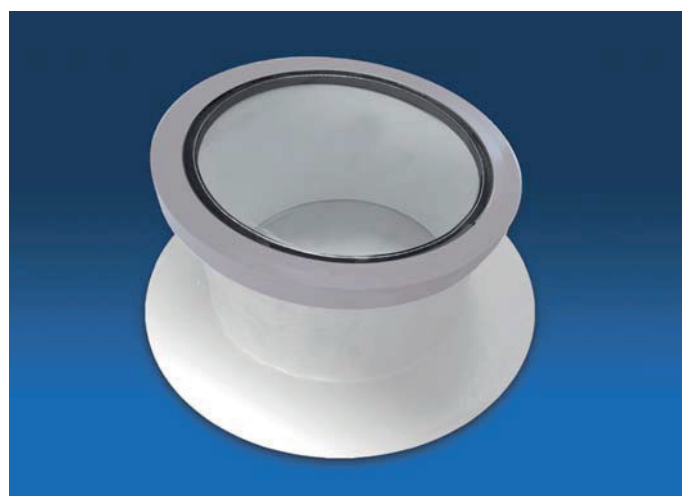
- Fixed version.
- Suitable for roof slopes from 0° to 20°.
- Insulation U-value 1.1, g-value 61%, Lt value 79%.
- Uv pass 0%.
- Polyester curb made in white RAL 9010.
- Also possible on an E50 polyester curb at extra cost.
- Attachment edge for easy mounting on an existing curb (available at extra cost).
- Wall connection for easy mounting against the façade (available at extra cost).
- Self-Cleaning due to the inclined surface.



Adaptor for mounting on existing curb



Daylight size D in cm	Roof opening size in cm	Polyester E30 height 30 cm	Extra cost adaptor
Ø 40	Ø 40	1087	65
Ø 50	Ø 50	1185	82
Ø 60	Ø 60	1283	102
Ø 70	Ø 70	1394	118
Ø 80	Ø 80	1491	137
Ø 100	Ø 100	3043	169
Ø 130	Ø 130	4302	169



Megalux® Glass-Unit round



SMART WITH DAYLIGHT

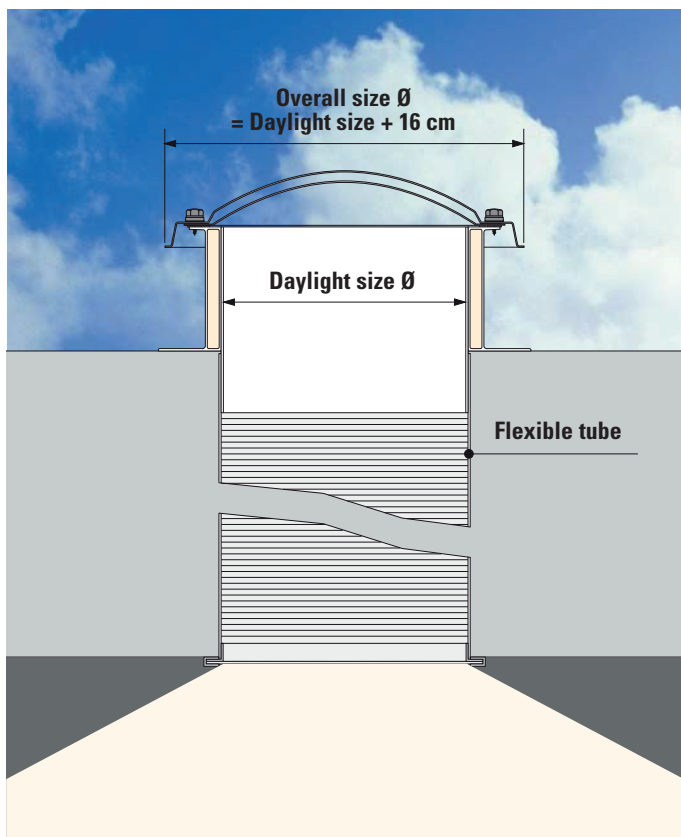
# MegatubE

The system consists of an acrylic double skinned skydome (85%), insulated polyester curb and 3 meters of flexible aluminium tube with helical reinforcement and ceiling panel in maximum size for optimum light transmission. Suitable for flat / gently sloping and pitched roofs with a maximum roof package (thickness) of 3 meters.

All sizes expandable to 6 meters roof package, by means of an extension set.

The **MegatubE** is always equipped with a light fixture. The light yield is affected by, among other things, the geographic location and atmospheric influences but also by ceiling height and the colour of the room.

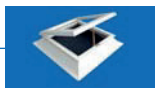
Daylight size in cm	Flat roof version	Sloping roof model	Extension set 3 mtr.
Ø 30	548	852	82
Ø 45	624	934	105
Ø 50	693	1005	143
Ø 60	798	1118	209



With the MegatubE you can create a healthier and more pleasant working and living environment.



# Ventilation units, PVC and Polyester



	Daylight size D in cm	Ventilation unit (S = solo T = tandem)			
		PVC SF16		Polyester H15	
		manual	electric	manual	electric
S	40 x 40	426		524	
S	50 x 50	446		575	
S	55 x 55	463			
S	60 x 60	484	875	630	1021
S	70 x 70	525	916	695	1086
S	75 x 75	537	928	718	1109
S	80 x 80	547	938	734	1125
S	90 x 90	583	974	783	1174
S	100 x 100	603	994	812	1203
S	105 x 105	643	1034	849	1240
S	110 x 110	673	1064		
T	120 x 120	979	1571	1230	1822
T	130 x 130	1011	1603	1286	1878
T	140 x 140	1054	1646	1380	1972
T	150 x 150	1087	1679	1432	2024
T	160 x 160	1149	1741	1471	2063
T	180 x 180	1216	1808	1621	2213
T	200 x 200	1324	1916	1808	2400
T	220 x 220	1479	2071	2169	2761
T	230 x 230	1523	2115		
T	250 x 250	1624	2216		
S	30 x 80	452	843		
S	30 x 130	539	930		
S	40 x 70	452	843	590	981
S	40 x 100	525	916	695	1086
T	40 x 190	922	1514		
S	50 x 100	529	920	718	1109
S	50 x 110	547	938	323	714
S	60 x 90	510	901	732	1123
S	60 x 130	590	981		
T	60 x 180	952	1544		
S	70 x 100	561	952	754	1145
S	70 x 130	603	994	812	1203
S	75 x 125	603	994	827	1218
T	75 x 175	976	1568	1220	1812
S	80 x 130	634	1025	864	1255
T	80 x 160	979	1571		
T	80 x 180	1012	1604	1329	1921
T	80 x 220	1097	1689	1391	1983
T	80 x 230	1118	1710		
T	80 x 250	1163	1755		
T	80 x 280	1217	1809		
T	90 x 120	899	1491	1151	1743
T	90 x 150	964	1556	1243	1835
T	90 x 180	1033	1625	1344	1936
T	100 x 130	922	1514	1156	1748
T	100 x 150	976	1568		
T	100 x 160	1002	1594	1277	1869
T	100 x 190	1069	1661	1384	1976
T	100 x 200	1087	1679	1413	2005
T	100 x 220	1139	1731	1501	2093
T	100 x 230	1151	1743		
T	100 x 250	1199	1791	1603	2195
T	100 x 280	1255	1847		
T	105 x 230	1171	1763		
T	120 x 150	1033	1625	1344	1936
T	120 x 180	1092	1684	1435	2027
T	120 x 210	1160	1752	1540	2132
T	130 x 160	1084	1676	1418	2010
T	130 x 190	1142	1734	1504	2096
T	130 x 220	1194	1786	1601	2193
T	130 x 230	1206	1798		
T	130 x 250	1264	1856	1694	2286
T	130 x 280	1356	1948		
T	160 x 190	1199	1791	1599	2191
T	160 x 220	1253	1845	1691	2283
T	160 x 230	1282	1874		
T	160 x 250	1356	1948	1857	2449
T	160 x 280	1426	2018	1965	2557
T	180 x 280	1477	2069		

## Megalux® ventilation unit consists of:

- PVC curb SF16 (small flange) or a polyester curb H15
- PVC ventilation frame
- Spindle (manual or electric opening mechanism)

The unit is pre-assembled.

## Prices ventilation manual / electric operated

Single telescopic spindle, including brackets a)	84
Double spindle, including brackets a)	335
Motor spindle solo 230 V a)	551
Motor spindle solo 24 V a)	563
Motor spindle tandem 230 V a)	1100
Chain actuator 230 V 300 mm	475
Chain actuator 230 V 300 mm with remote control	577
Chain actuator tandem 230 V 300 mm	927
Chain actuator tandem 230 V 300 mm with remote control	1071
Switch built-in	88
Switch build-on	107
Crank handle 1.0 meter	49
Crank handle 1.5 meter	49
Crank handle 2.0 meter	49
Crank handle 2.5 meter	63
Crank handle 3.0 meter	63
Crank handle 3.5 meter	63
Crank handle 4.0 meter	63
Telescopic crank handle 1.0 / 1.8 mtrs	59
Telescopic crank handle 1.8 / 3.0 mtrs	71

## Prices ventilation through the curb

Xpelair ventilator GX9 b)	1352
Xpelair ventilator GX12 b)	2120
Xpelair electronic operation unit	392
Crossflow ventilator 60-1800 b)	659
Crossflow ventilator 60-2400 b)	979
Ventilation grill for PVC curb	118
Ventilation grill for polyester curb	494

## Prices other

Wind and rain control	1313
Thermostat independently adjustable from 5 °C to 30 °C	214
1-channel remote control transmitter c)	118
15-channel transmitter with LCD display c)	133
1-channel wall transmitter c)	132
15-channel wall transmitter with LCD display c)	146
Remote control receiver 400W IP55	151

## Comment:

- Prices of these items are included assembly.
- The ventilators and grill are assembled delivered including ventilator case in the curb
- With each remote control and/or wall transmitter you need at least 1 receiver.



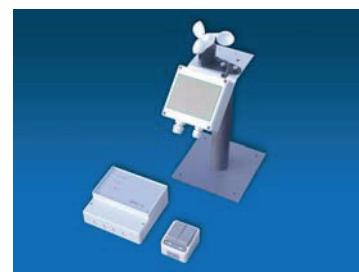
Ventilation unit with motor spindle



Ventilation unit with chain actuator


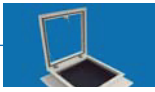




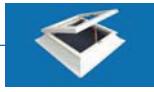
Remote control with and without LCD display



Wind and rain control

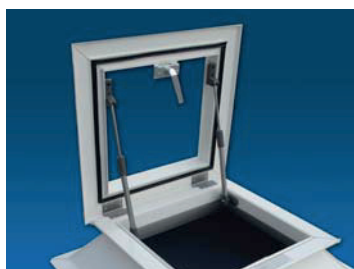
# Vluchtluikunits Dakbetredingunits

 Daylight size D in cm	 Escape hatch		 Roof access hatch		
	Curb PVC SF16 PVC frame handle/chain	Curb PVC SF16 PVC frame handle/slide rods	Curb PVC R016 PVC frame handle/slide rods	Curb PVC SF16 PVC frame handle/gas spring	Curb PVC R016 PVC frame handle/gas spring
70 x 70	567	616	707	681	772
75 x 75	579	628	755	693	820
80 x 80	589	638	765	703	830
90 x 90	625	674	793	739	858
100 x 100	645	694	848	759	913
105 x 105	685	734	904	799	969
60 x 90	552	601	715	666	780
70 x 100	603	652	786	717	851
75 x 125	662	711	885	776	950
75 x 175					1240
80 x 130	690	739	899	804	964
80 x 180					1419
90 x 150					1221
90 x 180					1514

 Daylight size D in cm	 Roof access hatch with ventilation			
	Curb PVC SF16 PVC frame spindle/slide rods	Curb PVC R016 PVC frame spindle/slide rods	Curb PVC SF16 PVC frame spindle/gas spring	Curb PVC R016 PVC frame spindle/gas spring
70 x 70	729	820	789	880
75 x 75	741	868	801	928
80 x 80	751	878	811	938
90 x 90	787	906	847	966
100 x 100	807	961	867	1021
105 x 105	847	1017	907	1077
60 x 90	714	828	774	888
70 x 100	765	899	825	959
75 x 125	824	998	884	1058
75 x 175				
80 x 130	852	1012	912	1072
80 x 180				



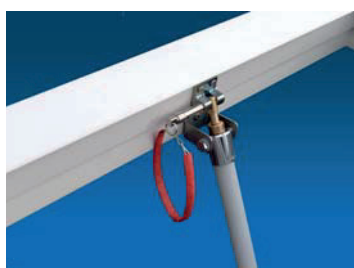
Roof access hatch with electric operation



Roof access hatch, PVC curb, PVC frame, crank handle with slide rods



Escape hatch, PVC curb, PVC frame, crank handle with chains



Roof access hatch with ventilation, spindle with pull and release string

### Versions of Escape hatch unit and Roof access hatch unit


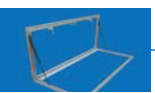
- Units are consisting of a curb, a ventilation frame and pre-assembled ironwork. To complete the hatch you need to order a skydome and in case of ventilation option a crank handle.
- For regular use its better to combine them with a polycarbonate (PC) skydome.
- The roof opening size for PVC SF16 curbs is D + 20 cm and for PVC R016 curbs the same as the daylight size.
- Hinges are standard mounted on the longest side of the unit by rectangular versions.

### Prices parts roof access/escape hatch

Crank handle with Chains a)	126
Crank handle with Slide Rods a)	175
Crank handle with Gas springs a)	240
Spindle with Chains + Pull string a)	219
Spindle with Slide Rods + Pull string a)	288
Spindle with Gas springs + Pull string a)	348
Double Spindle with Slide Rods + Pull string a)	613
Double Spindle with Gas springs + Pull string a)	675
Crank handle	51
Crank handle with Keylock	126
Slide Rods	132
Gas springs	194
Sealing rubber for Roof access/aluminium frame, per m1	28

### Comment:

a) Prices included assembly when ordered as unit.

 Daylight size D in cm	 Roof access frame aluminium* manual gas springs/crank handle
	120 x 120
130 x 130	1480
160 x 160	1586
100 x 130	1408
100 x 160	1460
100 x 200	1802
100 x 220	1856
100 x 250	1895
120 x 150	1501
130 x 160	1663

Roof access hatch, PVC curb, PVC frame with crank handle and gas springs





SHEV system type BG-3



SHEV system type BG-E

## Information Smoke and Heat exhaust ventilation systems

### CE Smoke and heat exhaust ventilation systems (SHEV's)

Van Deudekom Plastics BV is an officially certified manufacturer/supplier of pre-assembled SHEV systems.

Megalux® Smoke and Heat exhaust ventilation systems (SHEV's) are equipped with CE marking and tested according to the European standard **EN 12101-2** and **VDA 2159**.

With **Megalux® SHEV systems** (in case of fire) are extracted from the fire compartment of a building so:

- human lives are protected against build up of smoke and heat in the escape areas;
- the building construction is better protected because the temperature stays lower;
- direct fire damage to inventory is less because of slower movement of the fire through the building;
- firefighters can work faster and more accurate.

Of course the use of skydomes brings the advantage of daylight into the building.

Every **Megalux® SHVE system** is delivered as a complete automatic opening system through heat control (**Type BG-1**).

This basic system consists an enhanced PVC frame, with build-in pneumatic opening mechanism.

The basic system can be delivered with options for daily ventilation. Electric with a motor spindle (**Type BG-2**) or pneumatic if air compressor is available with auxiliary cylinder (**Type BG-3** or double stage cylinder **Type BG-3-DH**).



The SHEV's system can also be delivered as a complete electrical system. The pneumatic cylinder is than replaced by a 24V motor spindle (**Type BG-E**). This typ is often used in smaller rooms like staircases and can be used for daily ventilation.

For the staircases we have also complete package with all the peripherals (**Type BG-E-TP**).

All the Megalux® SHEV systems are pre-assembled for easy mounting on the roof.

# Smoke and Heat exhaust ventilation systems

## Pneumatic SHEV 165° System


Daylight size D in cm	Roof opening size	Ag m <sup>2</sup>	Type spoiler	Aw m <sup>2</sup> with spoiler	Aw m <sup>2</sup> without spoiler	Without ventilation		With ventilation		
						Type* BG-1	CO2	E-motor Type* BG-2	Auxiliary cylinder Type* BG-3	Double stage cyl. Type* BG-3 DH
80 x 80	100 x 100	1,000	nvt	nvt	0,600	1867	24gr	2361	2331	2262
100 x 100	120 x 120	1,440	1	0,936	0,864	1975	24gr	2468	2438	2371
105 x 105	125 x 125	1,563	1	1,016	0,938	2018	24gr	2512	2481	2415
130 x 130	150 x 150	2,250	1	1,575	1,283	2101	24gr	2592	2563	2496
160 x 160	180 x 180	3,240	3	2,268	1,782	2217	40gr	2711	2681	2613
180 x 180	200 x 200	4,000	4	2,800	2,200	2319	55gr	2814	2784	2716
200 x 200	220 x 220	4,840	4	3,388	2,662	5216	80gr	5711	5680	5610
80 x 130	100 x 150	1,500	1	0,975	0,900	1941	24gr	2435	2407	2339
80 x 180	100 x 200	2,000	2	1,300	1,200	2017	24gr	2511	2480	2412
80 x 220	100 x 240	2,400	2	1,560	1,440	2080	24gr	2577	2548	2479
80 x 230	100 x 250	2,500	2	1,625	1,500	2098	24gr	2591	2561	2495
100 x 130	120 x 150	1,800	1	1,175	1,080	1987	24gr	2480	2451	2382
100 x 160	120 x 180	2,160	3	1,404	1,188	2039	24gr	2535	2505	2436
100 x 220	120 x 240	2,880	3	1,958	1,584	2082	24gr	2578	2549	2480
100 x 230	120 x 250	3,000	3	2,040	1,650	2096	40gr	2590	2559	2493
105 x 230	125 x 250	3,125	3	2,122	1,719	2104	40gr	2598	2567	2499
130 x 160	150 x 180	2,700	1	1,890	1,539	2101	40gr	2592	2563	2496
130 x 190	150 x 210	3,150	1	2,205	1,764	2165	40gr	2660	2631	2563
130 x 220	150 x 240	3,600	4	2,520	1,980	2233	40gr	2729	2697	2631
130 x 230	150 x 250	3,750	4	2,625	2,062	2255	40gr	2750	2722	2652
130 x 280	150 x 300	4,500	4	2,925	2,340	2351	55gr	2846	2817	2748
160 x 220	180 x 240	4,320	3	3,024	2,376	2325	55gr	2819	2788	2723
160 x 230	180 x 250	4,500	3	3.150	2,475	2351	55gr	2846	2817	2748
160 x 280	180 x 300	5,400	4	3,510	2,754	2397	80gr	2891	2862	2795
180 x 280	200 x 300	6,000	5	3,900	3,000	2565	80gr	3060	3029	2961

Surcharge Spoilers (to improve Aw) **146**  
 Surcharge open/close (for remote service) **103**

- System BG-1** = Reinforced PVC frame + Pneumatic opening mechanism pre-assembled.
- System BG-2** = System BG-1 + Electrical ventilation with motor spindle 230V/300 mm opening.
- System BG-3** = System BG-1 + Pneumatic ventilation with auxiliary cylinder 300 mm opening.
- System BG-3-DH** = System BG-1 + Pneumatic ventilation with auxiliary double stage cylinder 300 mm opening.

- System BG-E** = System BG-1 with 24 Volt motor instead of Pneumatic cylinder.
- System BG-E-TP** = System BG-E for staircase (control unit 2-1-4A + smoke sensor + 2x alarm button + switch cabling not included).

## Electrical SHEV 165° System



Dagmaat D in cm	Daksparing in cm	Ag m <sup>2</sup>	Type spoiler	Aw m <sup>2</sup> with spoiler	Aw m <sup>2</sup> without spoiler	Type motor	Type* BG-E
80 x 80	100 x 100	1,000	nvt	nvt	0,600	24V/2A	1928
100 x 100	120 x 120	1,440	1	0,936	0,864	24V/4A	2033
105 x 105	125 x 125	1,563	1	1,016	0,938	24V/4A	2075
130 x 130	150 x 150	2,250	1	1,575	1,283	24V/4A	2155
160 x 160	180 x 180	3,240	3	2,268	1,782	24V/6A	2340
80 x 130	100 x 150	1,500	1	0,975	0,900	24V/2,6A	2062
80 x 180	100 x 200	2,000	2	1,300	1,200	24V/2,6A	2074
100 x 130	120 x 150	1,800	1	1,175	1,080	24V/4A	2045
100 x 160	120 x 180	2,160	3	1,404	1,188	24V/4A	2098
100 x 220	120 x 240	2,880	3	1,958	1,584	24V/4A	2140
100 x 230	120 x 250	3,000	3	2,040	1,650	24V/4A	2150
105 x 230	125 x 250	3,125	3	2,122	1,719	24V/4A	2160
130 x 160	150 x 180	2,700	1	1,890	1,539	24V/6A	2155
130 x 190	150 x 210	3,150	1	2,205	1,764	24V/6A	2287

Surcharge BG-E to BG-E-TP (Staircase system) **1530**

Surcharge control 24V motor  
 RWA control station 2-4A **848**  
 RWA control station 5-8A **2047**  
 RWA control station 5-16A Includes storage Battery for 72 hours emergency current. **2335**  
 Other sizes on demand

Optical smoke sensor **215**  
 Alarm button with entry window **184**  
 Thermo sensor 70 °C **430**  
 Build-on switch **105**  
 Other sizes on demand

\* Skydome and curb not include

**Rooflights in Acrylic (AC) or Polycarbonate (PC)**

**Rooflights in combination with ISO-frame or Glass-window**

			Ur-value* (W/m²K) EN 1873:2014 + A1:2016			LT-value (%) EN 13468, EN 16153, EN 410			g-value (%) EN 410			Rw-value** (dB) EN ISO 140-3		
			Skydome	Skydome + ISO-frame	Skydome + Glass-window	Skydome	Skydome + ISO-frame	Skydome + Glass-window	Skydome	Skydome + ISO-frame	Skydome + Glass-window	Skydome	Skydome + ISO-frame	Skydome + Glass-window
Acrylic (AC)	1-S Skydome	Clear (C)	5,70	0,86	1,20	92	32	73	85	26	49	21	27	40
	1-S Skydome	Opal (O)	5,70	0,86	1,20	84	29	66	76	23	44	21	27	40
	2-S Skydome	Clear (C/C)	2,94	0,76	0,95	85	30	67	75	23	44	23	29	40
	2-S Skydome	Opal (O/C)	2,94	0,76	0,95	78	27	62	66	20	38	23	29	40
	2-S Skydome	Opal (O/O)	2,94	0,76	0,95	74	26	58	64	19	37	23	29	40
	2-S Skydome	Heatstop	2,94	0,76	0,95	47	16	37	32	10	19	23	29	40
	3-S Skydome	Clear (C/C/C)	1,92	0,69	0,85	78	27	62	67	20	39	25	31	40
	3-S Skydome	Opal (O/C/C)	1,92	0,69	0,85	71	25	56	62	19	36	25	31	40
	4-S Skydome	Clear (C/C/C/C)	1,43	0,63	0,77	72	25	57	59	18	34	26	33	40
	4-S Skydome	Opal (O/C/C/C)	1,43	0,63	0,77	66	23	52	52	16	30	26	33	40
Polycarbonate (PC)	6-S ISO Dome	Opal (C/C/O)	1,36	0,62	0,76	65	23	51	48	14	28	24	32	40
	6-S ISO Dome	Opal (O/C/O)	1,36	0,62	0,76	59	21	47	46	14	27	24	32	40
	1-S Skydome	Clear (C)	5,70	0,86	1,20	90	32	71	82	25	48	21	27	40
	1-S Skydome	Opal (O)	5,70	0,86	1,20	84	29	66	76	23	44	21	27	40
	2-S Skydome	Clear (C/C)	2,94	0,76	0,95	81	28	64	72	22	42	23	29	40
	2-S Skydome	Opal (O/C)	2,94	0,76	0,95	74	26	58	62	19	36	23	29	40
	2-S Skydome	Opal (O/O)	2,94	0,76	0,95	68	24	54	58	17	34	23	29	40
	2-S Skydome	Heatstop	2,94	0,76	0,95	45	16	36	32	10	19	23	29	40
	3-S Skydome	Clear (C/C/C)	1,92	0,69	0,85	73	26	58	65	20	38	25	31	40
	3-S Skydome	Opal (O/C/C)	1,92	0,69	0,85	64	22	51	54	16	31	25	31	40
4-S Skydome	Clear (C/C/C/C)	1,43	0,63	0,77	66	23	52	57	17	33	26	33	40	
4-S Skydome	Opal (O/C/C/C)	1,43	0,63	0,77	60	21	47	48	14	28	26	33	40	
6-S ISO Dome	Opal (C/C/O)	1,36	0,62	0,76	56	20	44	43	13	25	24	32	40	
6-S ISO Dome	Opal (O/C/O)	1,36	0,62	0,76	52	18	41	41	12	24	24	32	40	

\* U-value per size / version is available on request

\*\* Frequency curve per size / version is available on request

ISO-frame = 10-wall PC-plate, thickness 32 mm Glass-frame = Insulating glass HR++			U-value (W/m²K) EN 1873:2014 + A1:2016	LT-value (%) EN 13468, EN 16153, EN 410	g-value (%) EN 410	Rw-value (dB) EN ISO 140-3
ISO-frame	Opal	(O)	1,14	35	30	25
Glass-frame	Clear	(C)	1,10	79	58	40

**Insulation value of curbs, Uup value\* (W/m²K)**

EN 1873:2014 + A1:2016, EN ISO 10211

**PVC curb (separated compartments)**

	Uup
- PVC SF16 (height 160 mm, thick 25 mm)	2,9
- PVC BF16 (height 160 mm, thick 70 mm)	1,9
- PVC RO16 (height 160 mm, thick 70 mm)	1,8
- PVC BF16 EP (height 160 mm, EPS thick 70 mm)	0,59
- PVC RO16 EP (height 160 mm, EPS thick 70 mm)	0,61

**Polyester curb (GF-UP)**

	Uup
- POL H15 (height 150 mm, PUR thick 10 mm)	2,30
- POL E15 (height 150 mm, PUR thick 20 mm)	1,30
- POL E15/6 (height 150 mm, PUR thick 60 mm)	0,87
- POL E15/8 (height 150 mm, PUR thick 80 mm)	0,83
- POL E30 (height 300 mm, PUR thick 20 mm)	1,10
- POL E30/6 (height 300 mm, PUR thick 60 mm)	0,59
- POL E30/8 (height 300 mm, PUR thick 80 mm)	0,53
- POL E50 (height 500 mm, PUR thick 20 mm)	1,00
- POL E50/6 (height 500 mm, PUR thick 60 mm)	0,48
- POL E50/8 (height 500 mm, PUR thick 80 mm)	0,41

**Other technical data and performance of skydomes**

	Acrylic (AC)	Polycarbonate (PC)
Resistance to upward load (wind)	UL 1500 - UL 3000	UL 1500 - UL 3000
Resistance to downward load (snow)	DL 1125 - DL 2500	DL 1125 - DL 2500
Reaction to fire (EN 13501-1)	E, s2, d2	B, s1, d0
Small hard body impact (250 g, drop from 1m)	Pass	Pass
Large soft body impact (50 kg bag)	Fail	SB 600 - SB 1200
Durability	ΔA, Cu 1, Ku 1	ΔA, Cu 1, Ku 1
Impact strength in comparison to glass	25x	300x
Bending strength	105 N/mm <sup>2</sup>	90 N/mm <sup>2</sup>
E-Modulus (ISO 527)	3300 N/mm <sup>2</sup>	2400 N/mm <sup>2</sup>
Form resistance (Vicat) (ISO 306)	102 °C	150 °C

Ug-value = Thermal transmittance of glass (W/m²K)  
 Ur-value = Thermal transmittance of a rooflight (W/m²K)  
 Uup-value = Thermal transmittance of the upstand (W/m²K)  
 LT-value = Light transmission (%)  
 g-value = Total Solar energy transmittance (%)  
 Rw-value = Direct airborne sound insulation (dB)

\* U-value per size / version is available on request



## Prices, guarantee, quality and conditions

### Prices

- Gross prices Van Deudekom Plastics BV: as of June 1st, 2026.
- Prices are in €, excl. VAT.
- Other sizes and variations are available on request

### Guarantee

Megalux<sup>®</sup>-skydomes, curbs and ventilation systems come with a 10-year warranty when installed in accordance with manufacturer's instructions. A full warranty statement is available upon request.

### Quality

Megalux<sup>®</sup>-skydomes are developed, produced and delivered according to ISO-9001.

### Conditions

Delivery is according to the general sales conditions as registered by the Chamber of Commerce in Amsterdam by number 3480.

Price list: edition June 1, 2026.  
Subject to amendments.



**MEGALUX**<sup>®</sup>  
skydomes



**Van Deudekom Plastics bv**

Oceanenweg 9, 1047 BA Amsterdam, The Netherlands

Phone + 31 20 497 90 90

E-mail: [info@vandeudekom.nl](mailto:info@vandeudekom.nl)

website: [www.vandeudekom.nl](http://www.vandeudekom.nl)